



**Water Monitoring Result at C1 - HKCEC Extension  
Mid-Flood Tide**

Date	Time	Weather Condition	Sampling Depth m	Water Temperature °C			pH			Salinity ppt			DO Saturation %		DO mg/L		Turbidity NTU		Suspended Solids mg/L					
				Value	Average		Value	Average		Value	Average		Value	Average	Value	Average	Value	Average	Value	Average				
30/10/18	10:42	Fine	Middle	2.5	25.20	25.20	25.20	7.88	7.88	7.88	32.53	32.53	32.54	69.2	67.7	67.4	4.74	4.63	4.62	5.56	5.53	5.49	10	10.50
	10:44		Middle	2.5	25.20	25.20	25.20	7.88	7.88	7.88	32.55	32.55	32.54	67.0	65.7	67.4	4.59	4.50	4.62	5.44	5.44	5.49	11	
1/11/18	-	Typhoon Signal No. 3	Middle	-	-	-	-	-	-	-	-	-	-	-	-	-	-	-	-	-	-	-	-	-
	-		Middle	-	-	-	-	-	-	-	-	-	-	-	-	-	-	-	-	-	-	-	-	-
3/11/18	15:05	Cloudy	Middle	2.5	24.50	24.50	24.50	8.03	8.03	8.04	33.11	33.11	33.11	80.2	81.2	81.3	5.54	5.61	5.61	4.76	4.77	4.75	5	5.00
	15:07		Middle	2.5	24.50	24.50	24.50	8.04	8.04	8.04	33.11	33.11	33.11	81.8	81.8	81.3	5.65	5.65	5.61	4.75	4.73	4.75	5	
5/11/18	16:50	Fine	Middle	3.0	24.60	24.60	24.60	8.01	8.01	8.01	33.13	33.13	33.13	78.0	78.6	78.0	5.38	5.41	5.37	6.17	6.16	6.17	13	13.00
	16:52		Middle	3.0	24.60	24.60	24.60	8.01	8.01	8.01	33.13	33.13	33.13	77.7	77.6	78.0	5.35	5.35	5.37	6.16	6.17	6.17	13	
7/11/18	17:20	Fine	Middle	3.0	24.80	24.80	24.80	7.91	7.91	7.91	33.15	33.15	33.15	80.7	81.0	80.8	5.54	5.53	5.54	5.14	5.15	5.15	5	5.50
	17:22		Middle	3.0	24.80	24.80	24.80	7.91	7.91	7.91	33.15	33.15	33.15	80.9	80.7	80.8	5.56	5.54	5.54	5.15	5.14	5.15	6	
9/11/18	21:30	Cloudy	Middle	3.0	24.70	24.70	24.70	8.23	8.23	8.22	32.70	32.70	32.70	73.9	73.7	73.4	5.09	5.08	5.06	3.24	5.54	4.06	6	6.50
	21:31		Middle	3.0	24.70	24.70	24.70	8.23	8.20	8.22	32.70	32.70	32.70	73.4	72.4	73.4	5.06	4.99	5.06	3.47	3.98	4.06	7	
12/11/18	9:50	Cloudy	Middle	3.0	24.80	24.80	24.80	7.84	7.84	7.84	32.97	32.97	32.97	66.6	67.2	67.4	4.58	4.62	4.63	6.94	6.91	6.88	12	11.50
	9:52		Middle	3.0	24.80	24.80	24.80	7.84	7.84	7.84	32.96	32.96	32.97	67.8	67.8	67.4	4.66	4.66	4.63	6.85	6.82	6.88	11	
14/11/18	15:50	Cloudy	Middle	3.0	24.30	24.30	24.30	7.65	7.65	7.66	33.08	33.08	33.11	73.2	71.8	73.5	5.07	5.11	5.13	4.90	4.92	4.93	7	7.00
	15:52		Middle	3.0	24.30	24.30	24.30	7.66	7.66	7.66	33.13	33.13	33.11	74.6	74.5	73.5	5.17	5.16	5.13	4.94	4.95	4.93	7	
16/11/18	15:00	Cloudy	Middle	3.0	24.30	24.30	24.30	7.71	7.71	7.75	33.10	33.10	33.12	74.0	74.5	74.5	5.12	5.17	5.16	2.58	2.59	2.60	4	4.50
	15:02		Middle	3.0	24.30	24.30	24.30	7.78	7.78	7.75	33.14	33.14	33.12	74.7	74.8	74.5	5.17	5.18	5.16	2.60	2.61	2.60	5	
19/11/18	15:40	Fine	Middle	2.5	24.30	24.30	24.25	7.77	7.77	7.77	33.03	33.03	33.04	75.9	76.6	76.6	5.26	5.31	5.32	4.14	4.17	4.17	<2	<2
	15:42		Middle	2.5	24.20	24.20	24.25	7.77	7.77	7.77	33.04	33.04	33.04	77.0	77.0	76.6	5.35	5.35	5.32	4.18	4.18	4.17	<2	
21/11/18	17:45	Fine	Middle	3.0	24.80	24.80	24.85	7.71	7.71	7.74	33.29	33.29	33.29	77.5	77.8	78.2	5.31	5.33	5.36	9.09	8.95	8.99	9	9.50
	17:47		Middle	3.0	24.90	24.90	24.85	7.76	7.76	7.74	33.29	33.29	33.29	78.7	78.7	78.2	5.40	5.39	5.36	9.08	8.83	8.99	10	
23/11/18	16:05	Fine	Middle	3.0	23.80	23.80	23.75	7.66	7.66	7.67	33.33	33.33	33.33	72.7	73.4	73.6	5.09	5.14	5.15	3.96	3.95	3.94	3	3.00
	16:07		Middle	3.0	23.70	23.70	23.75	7.67	7.67	7.67	33.33	33.33	33.33	74.0	74.2	73.6	5.18	5.19	5.15	3.94	3.92	3.94	3	
26/11/18	8:50	Cloudy	Middle	3.0	22.40	22.40	22.35	7.45	7.45	7.45	32.79	32.79	32.80	69.3	69.8	69.9	4.99	5.02	5.03	5.63	5.63	5.63	9	9.00
	8:52		Middle	3.0	22.30	22.30	22.35	7.44	7.44	7.45	32.80	32.80	32.80	70.3	70.1	69.9	5.05	5.05	5.03	5.63	5.64	5.63	9	

Remarks:  
Single underline denotes exceedance over Action Level.  
Double underline denotes exceedance over Limit Level.



**Water Monitoring Result at P1 - HKCEC Phase I  
Mid-Flood Tide**

Date	Time	Weather Condition	Sampling Depth m	Water Temperature °C		pH		Salinity ppt		DO Saturation %		DO mg/L		Turbidity NTU		Suspended Solids mg/L								
				Value	Average	Value	Average	Value	Average	Value	Average	Value	Average	Value	Average	Value	Average							
30/10/18	10:27	Fine	Middle	2.5	25.50	25.50	25.40	7.77	7.77	7.79	32.72	32.72	32.67	54.6	53.8	53.9	3.71	3.66	3.67	3.53	3.53	3.55	7	6.50
	10:29		Middle	2.5	25.30	25.30	25.40	7.80	7.80	7.79	32.62	32.62	32.67	53.5	53.7	53.9	3.63	3.66	3.67	3.57	3.58	3.55	6	
1/11/18	-	Typhoon Signal No. 3	Middle	-	-	-	-	-	-	-	-	-	-	-	-	-	-	-	-	-	-	-	-	
	-		Middle	-	-	-	-	-	-	-	-	-	-	-	-	-	-	-	-	-	-	-	-	-
3/11/18	14:45	Cloudy	Middle	2.5	24.60	24.60	24.60	7.97	7.97	7.98	33.14	33.14	33.14	81.2	82.0	82.1	5.60	5.65	5.66	4.07	4.07	4.07	<2	3.00
	14:47		Middle	2.5	24.60	24.60	24.60	7.98	7.98	7.98	33.14	33.14	33.14	82.3	82.9	82.1	5.67	5.71	5.66	4.07	4.07	4.07	3	
5/11/18	16:30	Fine	Middle	3.0	25.20	25.20	25.20	7.97	7.97	7.98	33.36	33.36	33.35	78.5	80.5	80.4	5.35	5.48	5.48	4.97	4.99	5.01	10	9.50
	16:32		Middle	3.0	25.20	25.20	25.20	7.98	7.98	7.98	33.33	33.33	33.35	81.3	81.4	80.4	5.54	5.54	5.48	5.02	5.06	5.01	9	
7/11/18	17:00	Fine	Middle	3.0	25.60	25.60	25.60	7.79	7.79	7.81	33.26	33.26	33.26	80.4	80.0	80.4	5.44	5.42	5.44	5.20	5.20	5.20	7	6.50
	17:02		Middle	3.0	25.60	25.60	25.60	7.82	7.82	7.81	33.26	33.26	33.26	80.5	80.7	80.4	5.45	5.46	5.44	5.19	5.21	5.20	6	
9/11/18	21:00	Cloudy	Middle	3.0	24.70	24.70	24.70	8.26	8.26	8.26	32.77	32.77	32.77	73.0	75.6	73.3	5.03	5.21	5.06	6.66	6.46	6.18	6	6.50
	21:02		Middle	3.0	24.70	24.70	24.70	8.26	8.26	8.26	32.77	32.77	32.77	72.1	72.6	73.3	4.97	5.01	5.06	5.73	5.87	6.18	7	
12/11/18	9:30	Cloudy	Middle	3.0	25.60	25.60	25.65	7.69	7.69	7.71	33.06	33.06	33.07	75.1	75.4	75.1	5.09	5.11	5.08	8.05	8.00	8.00	9	9.50
	9:32		Middle	3.0	25.70	25.70	25.65	7.72	7.72	7.71	33.07	33.07	33.07	74.9	74.8	75.1	5.04	5.06	5.08	7.99	7.97	8.00	10	
14/11/18	15:30	Cloudy	Middle	3.0	24.50	24.50	24.55	7.29	7.29	7.31	32.85	32.85	32.85	66.6	66.9	67.6	4.60	4.62	4.67	4.66	4.68	4.67	11	10.00
	15:32		Middle	3.0	24.60	24.60	24.55	7.33	7.33	7.31	32.84	32.84	32.85	68.4	68.6	67.6	4.72	4.74	4.67	4.68	4.67	4.67	9	
16/11/18	14:35	Cloudy	Middle	3.0	24.50	24.50	24.50	7.67	7.67	7.70	33.12	33.12	33.13	74.2	74.5	74.8	5.11	5.13	5.16	1.86	1.89	1.88	5	5.00
	14:37		Middle	3.0	24.50	24.50	24.50	7.73	7.73	7.70	33.13	33.13	33.13	75.2	75.3	74.8	5.19	5.19	5.16	1.87	1.88	1.88	5	
19/11/18	15:20	Fine	Middle	2.5	25.00	25.00	25.00	7.71	7.70	7.71	33.22	33.22	33.22	74.2	75.2	75.5	5.08	5.14	5.17	1.94	1.98	1.97	<2	<2
	15:22		Middle	2.5	25.00	25.00	25.00	7.72	7.72	7.71	33.22	33.22	33.22	76.1	76.5	75.5	5.21	5.24	5.17	1.97	1.98	1.97	<2	
21/11/18	17:25	Fine	Middle	3.0	24.60	24.60	24.60	7.83	7.83	7.83	33.32	33.32	33.33	68.3	68.8	69.6	4.70	4.73	4.79	4.77	4.74	4.70	5	5.00
	17:27		Middle	3.0	24.60	24.60	24.60	7.83	7.83	7.83	33.33	33.33	33.33	70.6	70.5	69.6	4.86	4.85	4.79	4.70	4.57	4.70	5	
23/11/18	15:45	Fine	Middle	3.0	24.00	24.00	24.00	7.56	7.56	7.56	33.37	33.37	33.37	77.8	77.4	77.2	5.41	5.38	5.37	3.91	3.92	3.94	4	4.00
	15:47		Middle	3.0	24.00	24.00	24.00	7.56	7.56	7.56	33.37	33.37	33.37	76.9	76.7	77.2	5.34	5.33	5.37	3.96	3.97	3.94	4	
26/11/18	8:30	Cloudy	Middle	3.0	21.90	21.90	21.80	7.49	7.49	7.49	32.82	32.82	32.83	69.3	70.9	71.0	5.02	5.19	5.17	5.52	5.48	5.49	10	10.00
	8:32		Middle	3.0	21.70	21.70	21.80	7.49	7.49	7.49	32.83	32.83	32.83	72.0	71.9	71.0	5.23	5.22	5.17	5.48	5.49	5.49	10	

Remarks:  
Single underline denotes exceedance over Action Level.  
Double underline denotes exceedance over Limit Level.



**Water Monitoring Result at P3 - APA  
Mid-Flood Tide**

Date	Time	Weather Condition	Sampling Depth m	Water Temperature °C			pH			Salinity ppt			DO Saturation %		DO mg/L		Turbidity NTU		Suspended Solids mg/L					
				Value	Average		Value	Average		Value	Average		Value	Average	Value	Average	Value	Average	Value	Average				
30/10/18	10:31	Fine	Middle	2.5	25.10	25.10	25.20	7.81	7.81	7.82	32.49	32.47	32.44	63.8	63.4	63.6	4.37	4.34	4.36	3.27	3.18	3.11	6	6.00
	10:32		Middle	2.5	25.30	25.30		7.83	7.83		32.40	32.40		63.5	63.8		4.35	4.37		3.03	2.94		6	
1/11/18	-	Typhoon Signal No. 3	Middle	-	-	-	-	-	-	-	-	-	-	-	-	-	-	-	-	-	-	-	-	-
	-		Middle	-	-	-	-	-	-	-	-	-	-	-	-	-	-	-	-	-	-	-	-	-
3/11/18	14:50	Cloudy	Middle	2.5	24.50	24.50	24.50	8.00	8.00	8.01	33.13	33.13	33.13	81.2	81.6	81.3	5.61	5.63	5.61	4.08	4.08	4.07	4	4.00
	14:52		Middle	2.5	24.50	24.50		8.01	8.01		33.13	33.13		81.2	81.0		5.61	5.60		4.06	4.07		4	
5/11/18	16:35	Fine	Middle	3.0	24.70	24.70	24.75	7.98	7.98	7.99	32.99	32.99	32.99	76.6	76.4	77.0	5.26	5.26	5.29	6.46	6.38	6.40	14	14.00
	16:37		Middle	3.0	24.80	24.80		7.99	7.99		32.99	32.99		77.2	77.7		5.31	5.34		6.37	6.39		14	
7/11/18	17:05	Fine	Middle	3.0	24.80	24.80	24.80	7.84	7.84	7.85	33.28	33.28	33.28	79.8	79.9	80.1	5.48	5.49	5.50	4.96	4.97	4.96	9	8.50
	17:07		Middle	3.0	24.80	24.80		7.85	7.85		33.28	33.28		80.4	80.3		5.52	5.51		4.96	4.96		8	
9/11/18	21:06	Cloudy	Middle	3.0	24.70	24.70	24.70	8.27	8.27	8.27	32.75	32.75	32.75	74.6	75.0	73.9	5.15	5.18	5.10	7.43	7.49	7.28	7	7.00
	21:07		Middle	3.0	24.70	24.70		8.27	8.27		32.75	32.75		73.2	72.6		5.05	5.01		6.96	7.23		7	
12/11/18	9:35	Cloudy	Middle	3.0	25.10	25.10	25.10	7.75	7.75	7.76	32.92	32.92	32.92	69.4	69.9	70.2	4.75	4.78	4.80	7.52	7.52	7.53	8	8.50
	9:37		Middle	3.0	25.10	25.10		7.76	7.76		32.92	32.92		70.8	70.6		4.84	4.83		7.53	7.53		9	
14/11/18	15:35	Cloudy	Middle	3.0	24.50	24.50	24.50	7.47	7.47	7.49	33.06	33.06	33.06	67.8	67.7	68.0	4.68	4.68	4.70	4.38	4.37	4.36	6	6.00
	15:37		Middle	3.0	24.50	24.50		7.50	7.50		33.06	33.06		68.1	68.5		4.72	4.73		4.34	4.33		6	
16/11/18	14:40	Cloudy	Middle	3.0	24.50	24.50	24.50	7.73	7.73	7.73	33.15	33.15	33.15	71.5	71.6	71.8	4.94	4.96	4.96	1.12	1.12	1.15	4	4.00
	14:42		Middle	3.0	24.50	24.50		7.73	7.73		33.15	33.15		72.0	72.0		4.97	4.97		1.17	1.18		4	
19/11/18	15:25	Fine	Middle	2.5	24.40	24.40	24.45	7.72	7.72	7.73	33.17	33.17	33.17	73.5	73.9	74.0	5.08	5.10	5.10	1.87	1.80	1.84	<2	<2
	15:27		Middle	2.5	24.50	24.50		7.73	7.73		33.17	33.17		74.2	74.3		5.10	5.13		1.84	1.84		<2	
21/11/18	17:30	Fine	Middle	3.0	24.60	24.60	24.60	7.82	7.82	7.83	33.26	33.26	33.27	69.5	70.5	70.3	4.75	4.85	4.83	4.27	4.35	4.22	5	5.50
	17:32		Middle	3.0	24.60	24.60		7.83	7.83		33.27	33.27		69.9	71.4		4.78	4.92		4.26	3.99		6	
23/11/18	15:50	Fine	Middle	3.0	23.80	23.80	23.80	7.60	7.60	7.61	33.34	33.34	33.34	74.6	74.9	74.6	5.21	5.20	5.20	3.94	3.90	3.89	4	3.50
	15:52		Middle	3.0	23.80	23.80		7.61	7.61		33.34	33.34		75.3	73.6		5.25	5.14		3.85	3.86		3	
26/11/18	8:35	Cloudy	Middle	3.0	22.30	22.30	22.25	7.48	7.48	7.48	32.71	32.71	32.72	68.1	69.2	69.6	4.91	4.99	5.02	5.53	5.55	5.56	6	6.00
	8:37		Middle	3.0	22.20	22.20		7.48	7.48		32.72	32.72		70.5	70.6		5.08	5.09		5.56	5.58		6	

Remarks:  
Single underline denotes exceedance over Action Level.  
Double underline denotes exceedance over Limit Level.



**Water Monitoring Result at P4 - SOC  
Mid-Flood Tide**

Date	Time	Weather Condition	Sampling Depth m	Water Temperature °C		pH		Salinity ppt		DO Saturation %		DO mg/L		Turbidity NTU		Suspended Solids mg/L							
				Value	Average	Value	Average	Value	Average	Value	Average	Value	Average	Value	Average	Value	Average						
30/10/18	10:34	Fine	Middle	2.5	25.30	25.30	7.85	7.85	7.86	32.51	32.51	32.51	64.3	61.0	60.3	4.39	4.16	4.12	4.76	7.81	5.49	6	6.50
	10:36		Middle	2.5	25.40	25.40	7.86	7.86	7.86	32.51	32.51	32.51	58.9	57.1	60.3	4.02	3.90	4.12	4.71	4.68	5.49	7	
1/11/18	-	Typhoon Signal No. 3	Middle	-	-	-	-	-	-	-	-	-	-	-	-	-	-	-	-	-	-	-	-
	-		Middle	-	-	-	-	-	-	-	-	-	-	-	-	-	-	-	-	-	-	-	-
3/11/18	14:55	Cloudy	Middle	2.5	24.40	24.40	8.01	8.01	8.02	33.10	33.10	33.10	79.9	80.4	79.6	5.53	5.56	5.51	6.02	6.04	6.03	5	5.50
	14:57		Middle	2.5	24.40	24.40	8.02	8.02	8.02	33.10	33.10	33.10	79.1	79.0	79.6	5.47	5.47	5.51	6.01	6.05	6.03	6	
5/11/18	16:40	Fine	Middle	3.0	24.70	24.70	7.99	7.99	8.00	33.05	33.05	33.05	78.7	78.9	78.3	5.41	5.42	5.39	6.26	6.27	6.26	13	13.00
	16:42		Middle	3.0	24.60	24.60	8.00	8.00	8.00	33.05	33.05	33.05	77.7	77.8	78.3	5.35	5.36	5.39	6.25	6.26	6.26	13	
7/11/18	17:10	Fine	Middle	3.0	24.70	24.70	7.88	7.88	7.89	33.20	33.20	33.20	79.2	79.4	79.2	5.44	5.45	5.44	5.54	5.53	5.53	8	7.50
	17:12		Middle	3.0	24.80	24.80	7.89	7.89	7.89	33.20	33.20	33.20	79.4	78.7	79.2	5.45	5.40	5.44	5.52	5.52	5.53	7	
9/11/18	21:13	Cloudy	Middle	3.0	24.70	24.70	8.28	8.28	8.28	32.75	32.75	32.75	74.7	77.4	75.5	5.15	5.34	5.21	7.52	7.15	7.24	6	6.50
	21:14		Middle	3.0	24.70	24.70	8.28	8.28	8.28	32.75	32.75	32.75	74.6	75.1	75.5	5.15	5.18	5.21	7.20	7.09	7.24	7	
12/11/18	9:40	Cloudy	Middle	3.0	24.80	24.80	7.79	7.79	7.79	32.95	32.95	32.95	66.4	66.8	66.3	4.56	4.59	4.56	8.16	8.16	8.16	10	9.50
	9:42		Middle	3.0	24.80	24.80	7.79	7.79	7.79	32.94	32.94	32.95	66.0	65.9	66.3	4.54	4.53	4.56	8.17	8.14	8.16	9	
14/11/18	15:40	Cloudy	Middle	3.0	24.30	24.30	7.55	7.55	7.56	33.06	33.06	33.06	68.3	68.7	68.9	4.73	4.76	4.77	3.99	3.99	4.00	10	9.50
	15:42		Middle	3.0	24.30	24.30	7.57	7.57	7.56	33.05	33.05	33.06	69.1	69.4	68.9	4.79	4.80	4.77	4.02	4.00	4.00	9	
16/11/18	14:45	Cloudy	Middle	3.0	24.30	24.30	7.75	7.75	7.75	33.17	33.17	33.17	70.8	71.2	70.9	4.90	4.91	4.90	2.14	2.09	2.11	5	5.00
	14:47		Middle	3.0	24.30	24.30	7.75	7.75	7.75	33.17	33.17	33.17	70.8	70.8	70.9	4.90	4.90	4.90	2.10	2.12	2.11	5	
19/11/18	15:30	Fine	Middle	2.5	24.40	24.40	7.74	7.74	7.74	33.13	33.13	33.13	74.6	74.9	75.0	5.18	5.18	5.20	1.89	1.89	1.91	<2	<2
	15:32		Middle	2.5	24.30	24.30	7.74	7.74	7.74	33.13	33.13	33.13	75.2	75.4	75.0	5.21	5.22	5.20	1.94	1.93	1.91	<2	
21/11/18	17:35	Fine	Middle	3.0	24.50	24.50	7.80	7.80	7.81	33.26	33.26	33.26	71.6	71.7	71.9	4.96	4.97	4.97	8.79	8.33	8.22	9	8.50
	17:37		Middle	3.0	24.50	24.50	7.81	7.81	7.81	33.26	33.26	33.26	72.0	72.1	71.9	4.97	4.97	4.97	7.91	7.83	8.22	8	
23/11/18	15:55	Fine	Middle	3.0	23.60	23.60	7.63	7.63	7.63	33.32	33.32	33.32	70.6	72.4	71.9	4.95	5.08	5.04	4.01	4.01	4.01	4	4.00
	15:57		Middle	3.0	23.60	23.60	7.63	7.63	7.63	33.32	33.32	33.32	72.4	72.2	71.9	5.07	5.07	5.04	4.00	4.00	4.01	4	
26/11/18	8:40	Cloudy	Middle	3.0	22.50	22.50	7.47	7.47	7.47	32.75	32.75	32.75	69.6	69.9	70.2	4.99	5.01	5.04	5.51	5.45	5.46	6	6.50
	8:42		Middle	3.0	22.40	22.40	7.47	7.47	7.47	32.75	32.75	32.75	70.5	70.7	70.2	5.07	5.08	5.04	5.43	5.44	5.46	7	

Remarks:  
Single underline denotes exceedance over Action Level.  
Double underline denotes exceedance over Limit Level.



**Water Monitoring Result at P5 - WCT / RT / IT  
Mid-Flood Tide**

Date	Time	Weather Condition	Sampling Depth m	Water Temperature °C		pH		Salinity ppt		DO Saturation %		DO mg/L		Turbidity NTU		Suspended Solids mg/L								
				Value	Average	Value	Average	Value	Average	Value	Average	Value	Average	Value	Average	Value	Average							
30/10/18	10:38	Fine	Middle	2.5	25.60	25.60	25.55	7.87	7.87	7.88	32.48	32.48	32.49	63.7	62.3	61.6	4.33	4.24	4.19	6.33	5.82	5.73	7	6.50
	10:40		Middle	2.5	25.50	25.50	25.55	7.88	7.88	7.88	32.49	32.49	32.49	60.7	59.5	61.6	4.13	4.05	4.19	5.41	5.36	5.73	6	
1/11/18	-	Typhoon Signal No. 3	Middle	-	-	-	-	-	-	-	-	-	-	-	-	-	-	-	-	-	-	-	-	
	-		Middle	-	-	-	-	-	-	-	-	-	-	-	-	-	-	-	-	-	-	-	-	-
3/11/18	15:00	Cloudy	Middle	2.5	24.40	24.40	24.40	8.02	8.02	8.03	33.12	33.12	33.12	80.1	80.6	79.9	5.53	5.50	5.50	5.21	5.20	5.22	6	6.00
	15:02		Middle	2.5	24.40	24.40	24.40	8.03	8.03	8.03	33.12	33.12	33.12	79.0	79.8	79.9	5.46	5.52	5.50	5.20	5.25	5.22	6	
5/11/18	16:45	Fine	Middle	3.0	24.50	24.50	24.55	8.00	8.00	8.00	33.12	33.12	33.12	77.6	77.3	78.2	5.36	5.33	5.37	6.10	6.12	6.12	11	11.00
	16:47		Middle	3.0	24.60	24.60	24.55	8.00	8.00	8.00	33.12	33.12	33.12	78.9	78.8	78.2	5.39	5.39	5.37	6.13	6.14	6.12	11	
7/11/18	17:15	Fine	Middle	3.0	24.90	24.90	24.90	7.91	7.91	7.91	33.17	33.17	33.18	77.3	77.2	77.9	5.29	5.20	5.32	5.10	5.09	5.09	9	8.50
	17:17		Middle	3.0	24.90	24.90	24.90	7.91	7.91	7.91	33.18	33.18	33.18	78.2	79.0	77.9	5.36	5.41	5.32	5.09	5.09	5.09	8	
9/11/18	21:25	Cloudy	Middle	3.0	24.60	24.60	24.60	8.29	8.29	8.29	32.76	32.76	32.76	74.3	75.9	75.2	5.13	5.24	5.20	6.93	6.25	6.42	7	8.00
	21:26		Middle	3.0	24.60	24.60	24.60	8.29	8.29	8.29	32.76	32.76	32.76	74.9	75.7	75.2	5.18	5.23	5.20	6.32	6.17	6.42	9	
12/11/18	9:45	Cloudy	Middle	3.0	24.80	24.80	24.80	7.83	7.83	7.83	32.95	32.95	32.95	70.1	70.5	70.4	4.82	4.85	4.85	7.43	7.35	7.39	9	8.50
	9:47		Middle	3.0	24.80	24.80	24.80	7.83	7.83	7.83	32.95	32.95	32.95	70.5	70.6	70.4	4.85	4.86	4.85	7.38	7.39	7.39	8	
14/11/18	15:45	Cloudy	Middle	3.0	24.30	24.30	24.30	7.61	7.61	7.62	33.08	33.08	33.08	71.8	72.0	71.9	4.98	4.99	4.98	5.05	5.02	5.02	6	6.00
	15:47		Middle	3.0	24.30	24.30	24.30	7.62	7.62	7.62	33.08	33.08	33.08	71.8	71.8	71.9	4.97	4.98	4.98	5.00	4.99	5.02	6	
16/11/18	14:50	Cloudy	Middle	3.0	24.30	24.30	24.30	7.76	7.76	7.77	33.18	33.18	33.18	71.3	71.4	71.4	4.94	4.95	4.95	2.58	2.59	2.59	7	7.50
	14:53		Middle	3.0	24.30	24.30	24.30	7.78	7.78	7.77	33.18	33.18	33.18	71.3	71.4	71.4	4.94	4.95	4.95	2.59	2.58	2.59	8	
19/11/18	15:35	Fine	Middle	2.5	24.10	24.10	24.10	7.75	7.75	7.75	33.24	33.25	33.25	75.2	75.4	75.2	5.22	5.24	5.22	3.14	3.12	3.15	2	2.00
	15:37		Middle	2.5	24.10	24.10	24.10	7.75	7.75	7.75	33.25	33.25	33.25	75.1	75.2	75.2	5.21	5.22	5.22	3.16	3.17	3.15	2	
21/11/18	17:40	Fine	Middle	3.0	24.50	24.50	24.50	7.77	7.77	7.78	33.27	33.27	33.27	70.8	71.0	71.0	4.89	4.89	4.90	9.00	8.45	8.60	12	11.50
	17:42		Middle	3.0	24.50	24.50	24.50	7.78	7.78	7.78	33.27	33.27	33.27	70.9	71.2	71.0	4.90	4.91	4.90	8.48	8.47	8.60	11	
23/11/18	16:00	Fine	Middle	3.0	23.70	23.70	23.70	7.66	7.66	7.66	33.34	33.34	33.34	71.7	73.1	73.1	5.01	5.12	5.11	4.00	4.03	4.05	3	3.50
	16:02		Middle	3.0	23.70	23.70	23.70	7.66	7.66	7.66	33.34	33.34	33.34	73.7	73.7	73.1	5.15	5.15	5.11	4.07	4.08	4.05	4	
26/11/18	8:45	Cloudy	Middle	3.0	22.40	22.40	22.35	7.46	7.46	7.46	32.78	32.78	32.78	67.3	67.9	68.3	4.83	4.88	4.90	6.03	6.02	6.02	9	9.00
	8:47		Middle	3.0	22.30	22.30	22.35	7.46	7.46	7.46	32.78	32.78	32.78	69.1	68.7	68.3	4.93	4.94	4.90	6.01	6.01	6.02	9	

Remarks:  
Single underline denotes exceedance over Action Level.  
Double underline denotes exceedance over Limit Level.



**Water Monitoring Result at RW21-P789 - GEC / CRB / SHK  
Mid-Flood Tide**

Date	Time	Weather Condition	Sampling Depth m	Water Temperature °C		pH		Salinity ppt		DO Saturation %		DO mg/L		Turbidity NTU		Suspended Solids mg/L								
				Value	Average	Value	Average	Value	Average	Value	Average	Value	Average	Value	Average	Value	Average							
30/10/18	11:28	Fine	Middle	3.5	25.90	25.90	25.90	7.85	7.85	7.86	32.64	32.64	32.62	62.4	62.3	58.8	4.21	4.22	3.98	3.39	3.39	3.40	5	5.00
	11:30		Middle	3.5	25.90	25.90	25.90	7.86	7.86	7.86	32.59	32.59	32.62	55.6	54.9	58.8	3.76	3.71	3.98	3.40	3.40	3.40	5	
1/11/18	-	Typhoon Signal No. 3	Middle	-	-	-	-	-	-	-	-	-	-	-	-	-	-	-	-	-	-	-	-	-
	-		Middle	-	-	-	-	-	-	-	-	-	-	-	-	-	-	-	-	-	-	-	-	-
3/11/18	16:15	Cloudy	Middle	3.5	24.80	24.80	24.75	8.00	8.00	8.01	33.10	33.10	33.10	83.4	84.4	83.9	5.74	5.80	5.77	7.49	7.50	7.48	11	11.50
	16:17		Middle	3.5	24.70	24.70	24.75	8.02	8.02	8.01	33.11	33.10	33.10	83.8	83.9	83.9	5.76	5.77	5.77	7.47	7.46	7.48	12	
5/11/18	17:30	Fine	Middle	4.0	24.80	24.80	24.70	7.96	7.96	7.96	33.15	33.15	33.15	83.4	83.4	82.8	5.73	5.73	5.69	4.77	4.78	4.79	20	19.00
	17:32		Middle	4.0	24.60	24.60	24.70	7.96	7.96	7.96	33.15	33.15	33.15	82.3	82.1	82.8	5.65	5.64	5.69	4.79	4.80	4.79	18	
7/11/18	18:45	Fine	Middle	4.0	25.20	25.20	25.20	7.78	7.78	7.80	33.24	33.24	33.25	76.7	76.0	75.9	5.21	5.18	5.17	4.47	4.46	4.47	13	12.00
	18:47		Middle	4.0	25.20	25.20	25.20	7.81	7.81	7.80	33.25	33.25	33.25	75.3	75.6	75.9	5.13	5.15	5.17	4.48	4.48	4.47	11	
9/11/18	18:21	Cloudy	Middle	3.5	25.30	25.30	25.30	8.16	8.16	8.16	32.66	32.66	32.66	79.4	78.7	79.2	5.42	5.31	5.33	9.23	9.11	9.14	5	5.50
	18:22		Middle	3.5	25.30	25.30	25.30	8.16	8.16	8.16	32.66	32.66	32.66	80.8	77.9	79.2	5.25	5.32	5.33	8.99	9.22	9.14	6	
12/11/18	10:30	Cloudy	Middle	4.0	24.90	24.90	24.95	7.82	7.82	7.82	32.97	32.97	32.97	77.5	77.4	77.6	5.32	5.31	5.32	6.25	6.26	6.26	7	7.50
	10:32		Middle	4.0	25.00	25.00	24.95	7.82	7.82	7.82	32.97	32.97	32.97	77.6	77.7	77.6	5.32	5.33	5.32	6.26	6.27	6.26	8	
14/11/18	18:45	Cloudy	Middle	4.0	24.60	24.60	24.60	7.74	7.74	7.76	33.22	33.22	33.22	66.3	66.6	67.1	4.57	4.59	4.62	6.32	6.34	6.33	9	9.00
	18:47		Middle	4.0	24.60	24.60	24.60	7.77	7.77	7.76	33.22	33.22	33.22	67.6	67.7	67.1	4.66	4.66	4.62	6.34	6.32	6.33	9	
16/11/18	15:10	Cloudy	Middle	4.0	24.50	24.50	24.55	7.74	7.74	7.75	33.17	33.17	33.17	77.2	77.4	76.9	5.33	5.34	5.31	3.65	3.65	3.66	8	8.00
	15:12		Middle	4.0	24.60	24.60	24.55	7.76	7.76	7.75	33.17	33.17	33.17	76.6	76.5	76.9	5.28	5.28	5.31	3.67	3.68	3.66	8	
19/11/18	17:00	Fine	Middle	4.0	24.50	24.50	24.50	7.76	7.76	7.77	33.06	33.06	33.06	77.5	77.9	77.9	5.35	5.38	5.38	4.43	4.46	4.46	3	3.50
	17:02		Middle	4.0	24.50	24.50	24.50	7.77	7.77	7.77	33.05	33.05	33.06	78.0	78.1	77.9	5.39	5.39	5.38	4.47	4.47	4.46	4	
21/11/18	16:05	Fine	Middle	4.0	25.20	25.20	25.30	7.60	7.60	7.63	33.32	33.32	33.32	70.5	71.7	71.0	4.81	4.87	4.83	10.62	9.96	9.96	10	10.50
	16:07		Middle	4.0	25.40	25.40	25.30	7.65	7.65	7.63	33.32	33.32	33.32	71.7	70.1	71.0	4.87	4.76	4.83	9.46	9.80	9.96	11	
23/11/18	16:15	Fine	Middle	4.0	23.80	23.80	23.75	7.82	7.82	7.83	33.11	33.11	33.11	80.2	80.0	79.7	5.61	5.59	5.56	3.02	2.94	2.96	3	3.50
	16:17		Middle	4.0	23.70	23.70	23.75	7.84	7.84	7.83	33.11	33.11	33.11	79.3	79.2	79.7	5.50	5.55	5.56	2.94	2.92	2.96	4	
26/11/18	9:20	Cloudy	Middle	4.0	22.60	22.60	22.55	7.44	7.44	7.46	32.80	32.80	32.84	71.7	71.6	73.4	5.13	5.13	5.17	7.14	7.17	7.15	10	10.00
	9:22		Middle	4.0	22.50	22.50	22.55	7.47	7.47	7.46	32.88	32.88	32.84	77.6	72.6	73.4	5.20	5.21	5.17	7.15	7.13	7.15	10	

Remarks:  
Single underline denotes exceedance over Action Level.  
Double underline denotes exceedance over Limit Level.



**Water Monitoring Result at WSD19 - Sheung Wan  
Mid-Flood Tide**

Date	Time	Weather Condition	Sampling Depth m	Water Temperature °C		pH		Salinity ppt		DO Saturation %		DO mg/L		Turbidity NTU		Suspended Solids mg/L								
				Value	Average	Value	Average	Value	Average	Value	Average	Value	Average	Value	Average	Value	Average							
30/10/18	9:15	Fine	Middle	3.5	24.80	24.80	24.80	7.63	7.63	7.67	32.53	32.53	32.53	58.5	58.7	58.4	4.03	4.05	4.03	6.62	6.61	6.60	7	7.00
	9:17		Middle	3.5	24.80	24.80	24.80	7.70	7.70	7.67	32.52	32.52	32.53	58.3	58.1	58.4	4.02	4.01	4.03	6.58	6.58	6.60	7	
1/11/18	-	Typhoon Signal No. 3	Middle	-	-	-	-	-	-	-	-	-	-	-	-	-	-	-	-	-	-	-	-	
	-		Middle	-	-	-	-	-	-	-	-	-	-	-	-	-	-	-	-	-	-	-	-	-
3/11/18	13:45	Cloudy	Middle	3.5	25.00	25.00	25.00	7.91	7.91	7.92	33.27	33.27	33.27	78.6	78.6	78.6	5.36	5.36	5.36	5.49	5.56	5.52	8	7.50
	13:47		Middle	3.5	25.00	25.00	25.00	7.93	7.93	7.92	33.27	33.27	33.27	78.6	78.7	78.6	5.36	5.37	5.36	5.51	5.52	5.52	7	
5/11/18	14:45	Fine	Middle	4.0	25.80	25.80	25.85	7.79	7.79	7.80	33.35	33.35	33.36	76.1	76.1	76.8	5.13	5.12	5.17	7.38	7.32	7.34	15	<u>15.50</u>
	14:47		Middle	4.0	25.90	25.90	25.85	7.81	7.81	7.80	33.36	33.36	33.36	77.3	77.5	76.8	5.20	5.21	5.17	7.31	7.34	7.34	16	
7/11/18	15:15	Fine	Middle	3.5	25.20	25.20	25.20	7.85	7.85	7.86	33.30	33.30	33.30	76.9	77.0	77.2	5.24	5.24	5.26	5.85	5.94	5.89	10	10.00
	15:17		Middle	3.5	25.20	25.20	25.20	7.86	7.86	7.86	33.30	33.30	33.30	77.5	77.4	77.2	5.28	5.27	5.26	5.88	5.87	5.89	10	
9/11/18	19:58	Cloudy	Middle	3.5	25.10	25.10	25.10	7.88	7.88	7.88	32.22	32.22	32.22	78.8	78.5	78.7	5.40	5.37	5.39	8.47	8.46	8.43	8	7.50
	19:59		Middle	3.5	25.10	25.10	25.10	7.88	7.89	7.88	32.22	32.22	32.22	79.3	78.1	78.7	5.44	5.36	5.39	8.53	8.25	8.43	7	
12/11/18	11:10	Cloudy	Middle	4.0	25.30	25.30	25.35	7.80	7.80	7.81	32.96	32.96	32.97	77.9	78.2	78.2	5.30	5.32	5.32	3.58	3.53	3.56	9	8.50
	11:12		Middle	4.0	25.40	25.40	25.35	7.82	7.82	7.81	32.97	32.97	32.97	78.2	78.4	78.2	5.32	5.33	5.32	3.56	3.58	3.56	8	
14/11/18	16:30	Cloudy	Middle	4.0	24.50	24.50	24.50	7.68	7.68	7.69	33.01	33.01	33.01	72.7	73.1	73.2	5.03	5.05	5.06	8.00	7.99	7.96	14	<u>15.00</u>
	16:32		Middle	4.0	24.50	24.50	24.50	7.70	7.70	7.69	33.01	33.01	33.01	73.4	73.5	73.2	5.07	5.08	5.06	7.94	7.91	7.96	16	
16/11/18	12:45	Cloudy	Middle	3.5	25.10	25.10	25.10	7.41	7.41	7.41	32.90	32.90	32.90	64.7	65.6	65.5	4.42	4.47	4.47	7.48	7.46	7.52	9	9.50
	12:47		Middle	3.5	25.10	25.10	25.10	7.41	7.41	7.41	32.90	32.90	32.90	65.5	66.0	65.5	4.48	4.52	4.47	7.55	7.59	7.52	10	
19/11/18	12:30	Fine	Middle	3.5	25.10	25.10	25.15	7.66	7.66	7.68	33.16	33.16	33.17	71.3	71.6	71.3	4.86	4.89	4.86	3.29	3.17	3.24	5	4.50
	12:32		Middle	3.5	25.20	25.20	25.15	7.70	7.70	7.68	33.17	33.17	33.17	71.4	70.8	71.3	4.87	4.83	4.86	3.27	3.24	3.24	4	
21/11/18	18:00	Fine	Middle	4.0	24.60	24.60	24.60	7.80	7.80	7.81	33.30	33.30	33.30	71.9	71.9	72.1	4.94	4.95	4.96	9.00	9.08	9.06	8	8.00
	18:02		Middle	4.0	24.60	24.60	24.60	7.81	7.81	7.81	33.30	33.30	33.30	72.1	72.4	72.1	4.96	4.98	4.96	8.95	9.20	9.06	8	
23/11/18	17:00	Fine	Middle	4.0	23.60	23.80	23.70	7.60	7.60	7.61	33.26	33.26	33.27	75.9	76.5	76.6	5.31	5.36	5.36	5.54	5.45	5.48	7	6.50
	17:02		Middle	4.0	23.70	23.70	23.70	7.62	7.62	7.61	33.28	33.28	33.27	77.1	77.0	76.6	5.39	5.39	5.36	5.45	5.48	5.48	6	
26/11/18	7:20	Cloudy	Middle	4.0	22.00	22.00	21.90	7.47	7.47	7.48	33.07	33.07	33.07	68.5	68.6	68.1	4.95	4.96	4.94	8.79	8.74	8.76	12	11.50
	7:22		Middle	4.0	21.80	21.80	21.90	7.48	7.48	7.48	33.07	33.07	33.07	67.6	67.6	68.1	4.94	4.90	4.94	8.77	8.72	8.76	11	

Remarks:  
Single underline denotes exceedance over Action Level.  
Double underline denotes exceedance over Limit Level.



**Water Monitoring Result at C1 - HKCEC  
Mid-Ebb Tide**

Date	Time	Weather Condition	Sampling Depth		Water Temperature			pH			Salinity			DO Saturation		DO		Turbidity		Suspended Solids				
					°C		-		ppt		%		mg/L		NTU		mg/L							
					Value	Average	Value	Average	Value	Average	Value	Average	Value	Average	Value	Average	Value	Average	Value	Average				
30/10/18	3:34	Fine	Middle	2.5	23.50	23.50	23.50	8.16	8.16	8.16	32.16	32.16	32.16	74.3	78.8	77.8	5.26	5.58	5.51	2.17	2.27	2.14	3	3.00
	3:35		Middle	2.5	23.50	23.50		8.16	8.16		32.16	32.16		79.8	78.4		5.65	5.56		2.06	2.07		3	
1/11/18	4:17	Cloudy	Middle	3.0	23.90	23.90	23.90	8.39	8.39	8.39	32.62	32.62	32.62	81.5	82.1	81.7	5.72	5.76	5.73	3.27	3.49	3.25	4	4.00
	4:18		Middle	3.0	23.90	23.90		8.39	8.39		32.62	32.61		81.9	81.2		5.75	5.70		3.16	3.08		4	
3/11/18	10:40	Cloudy	Middle	2.5	24.20	24.20	24.20	8.01	8.01	8.02	33.28	33.28	33.28	78.9	79.5	79.2	5.49	5.51	5.52	4.44	4.42	4.42	6	6.00
	10:42		Middle	2.5	24.20	24.20		8.02	8.02		33.28	33.28		79.5	79.0		5.52	5.55		4.42	4.41		6	
5/11/18	10:10	Fine	Middle	2.5	24.60	24.60	24.55	8.00	8.00	8.00	33.30	33.30	33.30	74.2	74.0	75.5	5.11	5.10	5.21	5.86	5.87	5.86	24	<u>23.00</u>
	10:12		Middle	2.5	24.50	24.50		8.00	8.00		33.30	33.30		76.9	76.8		5.31	5.30		5.87	5.85		22	
7/11/18	10:50	Fine	Middle	3.0	24.90	24.90	24.95	7.94	7.94	7.94	33.18	33.18	33.18	72.2	74.6	74.1	4.94	5.10	5.07	5.67	5.65	5.65	8	8.50
	10:52		Middle	3.0	25.00	25.00		7.94	7.94		33.18	33.18		74.8	74.9		5.12	5.12		5.63	5.63		9	
9/11/18	13:10	Fine	Middle	2.5	24.90	24.90	24.90	7.91	7.91	7.92	33.04	33.04	33.04	76.6	77.5	77.2	5.36	5.37	5.35	9.02	9.04	9.03	19	<u>18.50</u>
	13:12		Middle	2.5	24.90	24.90		7.92	7.92		33.04	33.04		77.2	77.4		5.34	5.31		9.04	9.03		18	
12/11/18	3:30	Cloudy	Middle	2.5	23.90	23.90	23.90	8.12	8.12	8.12	32.63	32.63	32.63	73.2	73.0	72.3	5.13	5.11	5.06	1.77	2.01	1.77	5	5.00
	3:31		Middle	2.5	23.90	23.90		8.12	8.12		32.63	32.63		71.8	71.1		5.00	4.98		1.61	1.68		5	
14/11/18	4:25	Cloudy	Middle	2.5	23.70	23.70	23.70	8.17	8.17	8.17	32.53	32.53	32.53	70.4	70.8	70.4	4.95	4.98	4.95	2.61	2.13	2.41	12	12.50
	4:26		Middle	2.5	23.70	23.70		8.17	8.17		32.53	32.53		70.1	70.3		4.93	4.94		2.64	2.27		13	
16/11/18	6:10	Cloudy	Middle	2.5	23.70	23.70	23.70	8.16	8.16	8.16	32.62	32.62	32.62	69.5	71.7	71.5	4.88	5.03	5.02	1.63	1.40	1.50	2	2.50
	6:11		Middle	2.5	23.70	23.70		8.16	8.16		32.62	32.62		73.0	71.9		5.12	5.04		1.46	1.50		3	
19/11/18	11:15	Fine	Middle	2.5	24.10	24.10	24.05	7.76	7.76	7.77	33.22	33.22	33.22	67.9	68.0	68.0	4.73	4.73	4.73	3.99	3.92	3.94	5	5.00
	11:17		Middle	2.5	24.00	24.00		7.77	7.77		33.22	33.22		67.9	68.0		4.73	4.73		3.93	3.93		5	
21/11/18	10:20	Fine	Middle	2.5	24.30	24.30	24.30	7.67	7.67	7.68	33.39	33.39	33.52	67.3	67.8	67.8	4.67	4.69	4.70	4.47	4.47	4.29	6	6.00
	10:22		Middle	2.5	24.30	24.30		7.68	7.68		33.90	33.39		68.1	68.1		4.71	4.72		4.25	3.95		6	
23/11/18	12:14	Fine	Middle	2.5	23.60	23.60	23.50	7.48	7.48	7.49	33.28	33.80	33.44	65.4	62.8	61.7	4.57	4.38	4.30	7.65	7.55	7.56	7	7.50
	12:16		Middle	2.5	23.80	23.00		7.49	7.49		33.34	33.34		60.3	58.1		4.20	4.06		7.44	7.59		8	
26/11/18	2:55	Cloudy	Middle	2.5	20.50	20.50	20.50	8.21	8.21	8.21	32.51	32.51	32.51	76.2	75.7	75.8	5.71	5.63	5.65	1.57	2.09	1.78	6	6.00
	2:56		Middle	2.5	20.50	20.50		8.21	8.21		32.51	32.51		75.6	75.8		5.63	5.64		1.60	1.84		6	

Remarks:  
Single underline denotes exceedance over Action Level.  
Double underline denotes exceedance over Limit Level.





**Water Monitoring Result at P1 - HKCEC Phase I  
Mid-Ebb Tide**

Date	Time	Weather Condition	Sampling Depth		Water Temperature			pH			Salinity			DO Saturation		DO		Turbidity		Suspended Solids				
					°C		-		ppt		%		mg/L		NTU		mg/L							
					Value	Average	Value	Average	Value	Average	Value	Average	Value	Average	Value	Average	Value	Average	Value	Average				
30/10/18	3:10	Fine	Middle	2.5	23.50	23.50	23.50	8.24	8.24	8.24	32.16	32.16	32.16	74.7	78.8	77.7	5.29	5.58	5.51	3.22	3.12	3.16	3	3.00
	3:11		Middle	2.5	23.50	23.50		8.24	8.24		32.16	32.16		79.0	78.3		5.61	5.55		3.07	3.23		3	
1/11/18	3:50	Cloudy	Middle	3.0	23.90	23.90	23.90	8.43	8.43	8.43	32.48	32.48	32.58	81.3	82.8	81.3	5.69	5.80	5.70	1.58	1.42	1.37	3	3.50
	3:51		Middle	3.0	23.90	23.90		8.43	8.43		32.68	32.68		81.2	80.0		5.69	5.60		1.18	1.29		4	
3/11/18	10:20	Cloudy	Middle	2.5	24.20	24.20	24.20	7.89	7.89	7.91	33.23	33.23	33.26	80.0	80.0	79.6	5.54	5.54	5.52	5.14	5.11	5.11	4	4.50
	10:22		Middle	2.5	24.20	24.20		7.92	7.92		33.29	33.29		79.1	79.2		5.49	5.49		5.10	5.10		5	
5/11/18	9:50	Fine	Middle	2.5	25.20	25.20	25.25	7.77	7.77	7.80	33.43	33.43	33.44	76.6	76.8	76.4	5.21	5.22	5.19	6.65	6.67	6.66	15	16.50
	9:52		Middle	2.5	25.30	25.30		7.82	7.82		33.45	33.45		76.0	76.2		5.16	5.18		6.66	6.64		18	
7/11/18	10:30	Fine	Middle	3.0	25.00	25.00	25.00	7.92	7.92	7.93	33.26	33.26	33.27	68.2	72.5	72.3	4.74	4.96	5.00	8.51	8.51	8.51	14	13.00
	10:32		Middle	3.0	25.00	25.00		7.93	7.93		33.27	33.27		74.1	74.4		5.20	5.09		8.51	8.52		12	
9/11/18	12:50	Fine	Middle	2.5	25.40	25.40	25.45	7.83	7.83	7.84	33.16	33.16	33.16	80.5	80.3	80.3	5.47	5.46	5.46	4.88	4.87	4.87	9	9.50
	12:52		Middle	2.5	25.50	25.50		7.85	7.85		33.16	33.16		80.2	80.3		5.45	5.45		4.86	4.86		10	
12/11/18	2:59	Cloudy	Middle	2.5	23.90	23.90	23.90	8.18	8.18	8.18	32.70	32.70	32.70	73.1	74.7	74.1	5.12	5.23	5.19	7.83	7.65	7.59	4	4.00
	3:00		Middle	2.5	23.90	23.90		8.18	8.18		32.70	32.70		75.1	73.4		5.26	5.14		7.29	7.58		4	
14/11/18	3:52	Cloudy	Middle	2.5	23.50	23.50	23.50	8.22	8.22	8.22	32.65	32.65	32.65	68.2	68.8	68.1	4.81	4.85	4.81	2.20	2.17	2.13	10	11.00
	3:53		Middle	2.5	23.50	23.50		8.22	8.22		32.65	32.65		67.6	67.9		4.77	4.79		2.08	2.06		12	
16/11/18	5:23	Cloudy	Middle	2.5	23.80	23.80	23.80	8.20	8.20	8.20	32.80	32.80	32.80	74.6	74.7	74.4	5.22	5.24	5.21	1.68	1.29	1.41	3	3.00
	5:24		Middle	2.5	23.80	23.80		8.20	8.20		32.80	32.80		75.0	73.4		5.23	5.14		1.35	1.33		<2	
19/11/18	10:55	Fine	Middle	2.5	24.40	24.40	24.40	7.71	7.71	7.72	33.25	33.25	33.26	71.0	71.4	71.7	4.91	4.94	4.96	3.99	4.04	4.00	4	4.50
	10:57		Middle	2.5	24.40	24.40		7.72	7.72		33.26	33.26		72.0	72.2		4.98	4.99		3.98	3.97		5	
21/11/18	10:00	Fine	Middle	2.5	24.90	24.90	24.95	7.41	7.42	7.45	33.10	33.10	33.10	69.7	69.6	69.6	4.78	4.77	4.77	5.06	4.92	4.88	7	7.50
	10:02		Middle	2.5	25.00	25.00		7.48	7.48		33.10	33.10		69.5	69.6		4.76	4.77		4.81	4.71		8	
23/11/18	11:58	Fine	Middle	2.5	24.00	24.00	24.00	7.20	7.20	7.24	32.25	32.25	32.26	55.2	56.1	56.9	3.86	3.93	3.99	6.00	6.02	6.03	5	5.00
	12:00		Middle	2.5	24.00	24.00		7.28	7.28		32.26	32.26		57.8	58.6		4.05	4.10		6.04	6.04		5	
26/11/18	2:30	Cloudy	Middle	2.5	20.10	20.10	20.10	8.25	8.25	8.25	32.66	32.66	32.66	77.8	77.5	77.5	5.82	5.79	5.79	2.33	2.55	2.40	6	7.00
	2:31		Middle	2.5	20.10	20.10		8.25	8.25		32.66	32.66		76.8	77.7		5.74	5.81		2.58	2.14		8	

Remarks:  
Single underline denotes exceedance over Action Level.  
Double underline denotes exceedance over Limit Level.



**Water Monitoring Result at P3 - APA  
Mid-Ebb Tide**

Date	Time	Weather Condition	Sampling Depth		Water Temperature			pH			Salinity			DO Saturation		DO		Turbidity		Suspended Solids				
					°C		-		ppt		%		mg/L		NTU		mg/L							
					Value	Average	Value	Average	Value	Average	Value	Average	Value	Average	Value	Average	Value	Average	Value	Average				
30/10/18	3:17	Fine	Middle	2.5	23.40	23.40	23.40	8.27	8.27	8.27	31.55	31.50	31.54	80.2	78.8	79.5	5.78	5.64	5.68	1.88	1.68	1.68	3	3.00
	3:18		Middle	2.5	23.40	23.40		8.27	8.27		31.55	31.55		78.6	80.4		5.59	5.72		1.67	1.49		3	
1/11/18	3:57	Cloudy	Middle	3.0	23.70	23.70	23.70	8.46	8.46	8.46	32.69	32.69	32.69	80.7	82.5	81.5	5.68	5.80	5.74	1.88	1.50	1.57	3	4.50
	3:58		Middle	3.0	23.70	23.70		8.46	8.46		32.69	32.69		81.9	81.0		5.76	5.70		1.47	1.44		6	
3/11/18	10:25	Cloudy	Middle	2.5	23.90	23.90	23.85	7.95	7.95	7.96	33.29	33.29	33.29	78.5	78.8	78.9	5.49	5.50	5.51	4.69	4.67	4.67	5	5.00
	10:27		Middle	2.5	23.80	23.80		7.96	7.96		33.29	33.29		79.1	79.2		5.52	5.53		4.66	4.66		5	
5/11/18	9:55	Fine	Middle	2.5	24.50	24.50	24.50	7.92	7.92	7.93	33.31	33.31	33.32	76.6	76.5	77.0	5.28	5.27	5.31	6.19	6.14	6.13	18	17.00
	9:57		Middle	2.5	24.50	24.50		7.93	7.93		33.32	33.32		77.3	77.4		5.33	5.34		6.12	6.08		16	
7/11/18	10:35	Fine	Middle	3.0	25.00	25.00	25.10	7.93	7.93	7.94	33.25	33.25	33.26	74.1	74.5	75.2	5.04	5.07	5.12	7.23	7.14	7.17	10	10.00
	10:37		Middle	3.0	25.20	25.20		7.94	7.94		33.26	33.26		76.1	76.2		5.18	5.19		7.13	7.16		10	
9/11/18	12:55	Fine	Middle	2.5	24.80	24.80	24.80	7.86	7.86	7.86	33.15	33.15	33.16	78.2	78.3	78.0	5.37	5.38	5.36	5.94	5.94	5.94	8	8.50
	12:57		Middle	2.5	24.80	24.80		7.86	7.86		33.16	33.16		77.6	77.8		5.33	5.35		5.94	5.94		9	
12/11/18	3:07	Cloudy	Middle	2.5	23.80	23.80	23.80	8.22	8.22	8.22	32.72	32.72	32.72	76.1	75.6	75.8	5.33	5.30	5.31	7.17	7.20	7.14	5	5.00
	3:08		Middle	2.5	23.80	23.80		8.22	8.22		32.72	32.72		75.7	75.9		5.30	5.32		7.10	7.08		5	
14/11/18	3:58	Cloudy	Middle	2.5	23.20	23.20	23.20	8.24	8.24	8.24	32.65	32.65	32.65	66.0	69.5	68.8	4.68	4.89	4.87	1.39	1.37	1.32	13	14.00
	3:59		Middle	2.5	23.20	23.20		8.24	8.24		32.65	32.65		70.1	69.7		4.97	4.93		1.24	1.26		15	
16/11/18	5:30	Cloudy	Middle	2.5	23.80	23.80	23.80	8.22	8.22	8.22	32.77	32.77	32.77	75.8	75.6	75.8	5.31	5.30	5.31	1.42	1.45	1.31	<2	3.00
	5:31		Middle	2.5	23.80	23.80		8.22	8.22		32.77	32.77		76.0	75.7		5.32	5.30		1.16	1.20		3	
19/11/18	11:00	Fine	Middle	2.5	24.00	24.00	24.00	7.78	7.78	7.78	33.30	33.30	33.30	70.3	69.9	69.7	4.89	4.85	4.85	3.27	3.24	3.26	4	4.00
	11:02		Middle	2.5	24.00	24.00		7.78	7.78		33.30	33.30		69.2	69.2		4.83	4.82		3.27	3.27		4	
21/11/18	10:05	Fine	Middle	2.5	24.30	24.30	24.30	7.53	7.53	7.54	33.39	33.39	33.39	68.4	68.1	68.7	4.73	4.75	4.76	4.08	4.01	4.05	7	7.50
	10:07		Middle	2.5	24.30	24.30		7.55	7.55		33.39	33.39		69.2	69.0		4.78	4.77		4.05	4.05		8	
23/11/18	12:02	Fine	Middle	2.5	23.70	23.70	23.70	7.34	7.34	7.36	33.43	33.43	33.43	61.5	62.1	62.1	4.30	4.34	4.34	7.42	7.23	7.07	6	5.50
	12:04		Middle	2.5	23.70	23.70		7.38	7.38		33.42	33.42		62.5	62.4		4.37	4.36		6.91	6.70		5	
26/11/18	2:38	Cloudy	Middle	2.5	20.10	20.10	20.10	8.27	8.27	8.27	32.66	32.66	32.66	74.1	75.4	74.7	5.54	5.65	5.59	1.26	1.14	1.20	9	7.50
	2:39		Middle	2.5	20.10	20.10		8.27	8.27		32.65	32.65		73.5	75.6		5.50	5.66		1.08	1.30		6	

Remarks:  
Single underline denotes exceedance over Action Level.  
Double underline denotes exceedance over Limit Level.



**Water Monitoring Result at P4 - SOC  
Mid-Ebb Tide**

Date	Time	Weather Condition	Sampling Depth		Water Temperature			pH			Salinity			DO Saturation		DO		Turbidity		Suspended Solids				
					°C		-		ppt		%		mg/L		NTU		mg/L							
					Value	Average	Value	Average	Value	Average	Value	Average	Value	Average	Value	Average	Value	Average	Value	Average				
30/10/18	3:24	Fine	Middle	2.5	23.20	23.20	23.20	8.28	8.28	8.28	32.29	32.29	32.29	80.1	79.7	79.8	5.69	5.67	5.68	2.49	2.61	2.46	3	3.00
	3:25		Middle	2.5	23.20	23.20		8.28	8.28		32.29	32.29		79.7	79.8		5.67	5.68		2.33	2.39		3	
1/11/18	4:03	Cloudy	Middle	3.0	23.60	23.60	23.60	8.47	8.47	8.47	32.71	32.71	32.71	80.7	82.0	80.5	5.68	5.77	5.69	1.04	1.10	1.07	16	9.50
	4:04		Middle	3.0	23.60	23.60		8.47	8.47		32.71	32.71		78.3	81.1		5.61	5.71		1.07	1.08		3	
3/11/18	10:30	Cloudy	Middle	2.5	24.10	24.10	24.10	7.99	7.99	7.99	33.29	33.29	33.29	80.9	81.0	80.9	5.62	5.63	5.62	4.69	4.67	4.67	4	4.00
	10:32		Middle	2.5	24.10	24.10		7.99	7.99		33.29	33.29		80.7	81.0		5.61	5.63		4.66	4.66		4	
5/11/18	10:00	Fine	Middle	2.5	24.40	24.40	24.40	7.95	7.95	7.96	33.31	33.31	33.31	75.9	76.3	76.4	5.25	5.27	5.28	6.44	6.66	6.61	26	<u>28.50</u>
	10:02		Middle	2.5	24.40	24.40		7.96	7.96		33.31	33.31		76.6	76.8		5.29	5.30		6.67	6.65		31	
7/11/18	10:40	Fine	Middle	3.0	24.90	24.90	24.90	7.93	7.93	7.93	33.26	33.26	33.26	73.9	73.9	74.1	5.06	5.06	5.07	7.23	7.28	7.27	8	9.00
	10:42		Middle	3.0	24.90	24.90		7.93	7.93		33.26	33.26		74.1	74.3		5.08	5.09		7.28	7.28		10	
9/11/18	13:00	Fine	Middle	2.5	24.70	24.70	24.75	7.88	7.88	7.88	33.13	33.13	33.14	75.2	75.0	75.7	5.17	5.16	5.20	5.24	5.21	5.23	11	11.00
	13:02		Middle	2.5	24.80	24.80		7.88	7.88		33.15	33.15		76.4	76.0		5.25	5.22		5.19	5.28		11	
12/11/18	3:13	Cloudy	Middle	2.5	23.70	23.70	23.70	8.23	8.23	8.23	32.72	32.72	32.72	74.3	77.3	75.8	5.22	5.43	5.32	5.86	6.02	5.68	9	7.00
	3:14		Middle	2.5	23.70	23.70		8.23	8.23		32.72	32.72		76.0	75.6		5.32	5.31		5.33	5.49		5	
14/11/18	4:07	Cloudy	Middle	2.5	23.20	23.20	23.20	8.25	8.25	8.25	32.68	32.68	32.68	70.5	71.5	71.6	4.99	5.06	5.07	3.91	3.58	3.57	14	15.00
	4:08		Middle	2.5	23.20	23.20		8.25	8.25		32.68	32.68		72.1	72.3		5.11	5.12		3.56	3.21		16	
16/11/18	5:37	Cloudy	Middle	2.5	23.70	23.70	23.70	8.23	8.23	8.23	32.77	32.77	32.77	75.0	75.9	74.8	5.26	5.32	5.24	1.07	1.10	1.13	2	2.00
	5:38		Middle	2.5	23.70	23.70		8.23	8.23		32.77	32.77		74.4	73.7		5.22	5.17		1.14	1.20		2	
19/11/18	11:05	Fine	Middle	2.5	23.90	23.90	23.90	7.74	7.74	7.74	33.24	33.24	33.24	70.3	70.5	70.6	4.90	4.92	4.92	2.97	2.97	2.97	6	5.00
	11:07		Middle	2.5	23.90	23.90		7.74	7.74		33.24	33.24		70.9	70.5		4.94	4.91		2.96	2.98		4	
21/11/18	10:10	Fine	Middle	3.0	24.20	24.20	24.20	7.60	7.60	7.61	33.50	33.50	33.50	66.7	67.8	68.0	4.63	4.70	4.71	4.25	4.37	4.23	8	8.00
	10:12		Middle	2.5	24.20	24.20		7.61	7.61		33.50	33.50		68.8	68.7		4.76	4.76		4.13	4.15		8	
23/11/18	12:06	Fine	Middle	2.5	23.80	23.80	23.80	7.40	7.40	7.42	33.43	33.43	33.41	63.3	61.8	62.1	4.41	4.32	3.83	5.20	4.88	4.90	5	5.50
	12:08		Middle	2.5	23.80	23.80		7.43	7.43		33.39	33.39		61.8	61.5		4.31	2.29		4.78	4.73		6	
26/11/18	2:46	Cloudy	Middle	2.5	20.30	20.30	20.30	8.28	8.28	8.28	32.63	32.63	32.63	76.0	75.9	76.4	5.67	5.66	5.70	1.10	1.20	1.23	3	4.50
	2:47		Middle	2.5	20.30	20.30		8.28	8.28		32.63	32.63		76.7	77.0		5.72	5.75		1.33	1.27		6	

Remarks:  
Single underline denotes exceedance over Action Level.  
Double underline denotes exceedance over Limit Level.



**Water Monitoring Result at P5 - WCT / RT / IT  
Mid-Ebb Tide**

Date	Time	Weather Condition	Sampling Depth		Water Temperature			pH			Salinity			DO Saturation		DO		Turbidity		Suspended Solids				
					°C		-		ppt		%		mg/L		NTU		mg/L							
					Value	Average	Value	Average	Value	Average	Value	Average	Value	Average	Value	Average	Value	Average	Value	Average				
30/10/18	3:30	Fine	Middle	2.5	23.40	23.40	23.40	8.29	8.29	8.29	32.29	32.29	32.29	79.1	78.5	78.5	5.60	5.57	5.57	1.55	1.42	1.42	6	5.50
	3:31		Middle	2.5	23.40	23.40		8.29	8.29		32.29	32.29		77.2	79.3		5.48	5.63		1.32	1.40		5	
1/11/18	4:11	Cloudy	Middle	3.0	23.80	23.80	23.80	8.47	8.47	8.47	32.70	32.70	32.70	82.3	81.1	81.3	5.78	5.69	5.71	1.47	1.49	1.54	3	3.00
	4:12		Middle	3.0	23.80	23.80		8.47	8.47		32.70	32.70		80.7	80.9		5.67	5.68		1.34	1.85		3	
3/11/18	10:35	Cloudy	Middle	2.5	24.10	24.10	24.05	8.00	8.00	8.01	33.26	33.26	33.28	80.3	80.5	80.6	5.58	5.61	5.61	5.94	5.96	5.96	5	4.50
	10:37		Middle	2.5	24.00	24.00		8.01	8.01		33.30	33.30		80.7	80.8		5.62	5.62		5.97	5.98		4	
5/11/18	10:05	Fine	Middle	2.5	24.40	24.40	24.40	7.98	7.98	7.98	33.30	33.30	33.31	77.6	77.9	78.3	5.36	5.38	5.40	5.95	5.99	5.98	26	25.50
	10:07		Middle	2.5	24.40	24.40		7.98	7.98		33.31	33.31		78.7	78.8		5.43	5.44		5.99	6.00		25	
7/11/18	10:45	Fine	Middle	3.0	25.00	25.00	24.95	7.93	7.93	7.94	33.25	33.25	33.25	75.9	77.4	77.7	5.20	5.30	5.33	5.57	5.52	5.55	7	7.00
	10:47		Middle	3.0	24.90	24.90		7.94	7.94		33.25	33.25		78.8	78.8		5.40	5.40		5.53	5.57		7	
9/11/18	13:05	Fine	Middle	2.5	24.80	24.80	24.80	7.90	7.90	7.90	33.15	33.15	33.15	77.7	77.8	77.9	5.32	5.35	5.35	6.27	6.37	6.30	11	11.50
	13:07		Middle	2.5	24.80	24.80		7.90	7.90		33.15	33.15		77.9	78.2		5.35	5.36		6.27	6.29		12	
12/11/18	3:21	Cloudy	Middle	2.5	23.80	23.80	23.80	8.25	8.25	8.25	32.71	32.71	32.71	76.8	77.1	76.3	5.38	5.40	5.35	7.91	7.79	7.75	5	6.00
	3:22		Middle	2.5	23.80	23.80		8.25	8.25		32.71	32.71		76.0	75.4		5.32	5.29		7.63	7.68		7	
14/11/18	4:13	Cloudy	Middle	2.5	23.50	23.50	23.50	8.26	8.26	8.26	32.67	32.67	32.67	68.8	67.5	68.1	4.85	4.76	4.80	3.44	3.41	3.33	5	6.00
	4:14		Middle	2.5	23.50	23.50		8.26	8.26		32.67	32.67		67.7	68.5		4.77	4.83		3.29	3.16		7	
16/11/18	5:46	Cloudy	Middle	2.5	23.80	23.80	23.80	8.24	8.24	8.24	32.74	32.74	32.74	75.1	75.5	74.8	5.26	5.29	5.24	1.09	1.13	1.12	2	3.00
	5:47		Middle	2.5	23.80	23.80		8.24	8.24		32.74	32.74		75.1	73.5		5.27	5.15		1.18	1.07		4	
19/11/18	11:10	Fine	Middle	2.5	23.70	23.70	23.70	7.75	7.75	7.76	33.23	33.23	33.23	74.4	74.5	74.0	5.20	5.21	5.18	3.40	3.41	3.43	<2	3.00
	11:12		Middle	2.5	23.70	23.70		7.76	7.76		33.23	33.23		73.6	73.6		5.15	5.15		3.44	3.47		3	
21/11/18	10:15	Fine	Middle	2.5	24.30	24.30	24.30	7.64	7.64	7.64	33.40	33.40	33.40	69.1	69.2	69.5	4.77	4.79	4.80	4.64	4.62	4.69	9	8.50
	10:17		Middle	2.5	24.30	24.30		7.65	7.63		33.40	33.40		69.9	69.9		4.82	4.82		4.82	4.67		8	
23/11/18	12:10	Fine	Middle	2.5	23.90	23.90	23.90	7.45	7.45	7.47	33.30	33.30	33.31	60.6	59.5	57.4	4.23	4.15	4.01	9.44	9.74	9.70	8	8.50
	12:12		Middle	2.5	23.90	23.90		7.48	7.48		33.32	33.32		53.7	55.7		3.76	3.89		9.69	9.94		9	
26/11/18	2:50	Cloudy	Middle	2.5	20.30	20.30	20.30	8.28	8.28	8.28	32.62	32.62	32.62	73.7	75.5	74.9	5.50	5.63	5.59	2.04	1.70	1.82	6	8.50
	2:51		Middle	2.5	20.30	20.30		8.28	8.28		32.62	32.62		75.7	74.8		5.65	5.58		1.67	1.87		11	

Remarks:  
Single underline denotes exceedance over Action Level.  
Double underline denotes exceedance over Limit Level.



**Water Monitoring Result at RW21-P789 - GEC / CRB / SHK  
Mid-Ebb Tide**

Date	Time	Weather Condition	Sampling Depth		Water Temperature			pH			Salinity			DO Saturation		DO		Turbidity		Suspended Solids				
					°C		-		ppt		%		mg/L		NTU		mg/L							
			m	Value	Average	Value	Average	Value	Average	Value	Average	Value	Average	Value	Average	Value	Average	Value	Average					
30/10/18	4:15	Fine	Middle	4.0	23.20	23.20	23.20	8.17	8.17	8.17	30.46	30.46	30.46	76.2	79.0	78.0	5.47	5.67	5.60	1.60	1.55	1.49	6	5.00
	4:16		Middle	4.0	23.20	23.20		8.17	8.17		30.46	30.46		77.3	79.5		5.54	5.71		1.22	1.57		4	
1/11/18	6:30	Cloudy	Middle	3.5	23.50	23.50	23.50	8.45	8.45	8.45	32.74	32.74	32.74	77.2	79.4	79.0	5.45	5.61	5.58	1.36	1.20	1.22	3	3.00
	6:31		Middle	3.5	23.50	23.50		8.45	8.45		32.74	32.74		79.5	79.8		5.61	5.64		1.14	1.18		3	
3/11/18	10:50	Cloudy	Middle	3.5	24.50	24.50	24.50	7.99	7.99	8.00	33.20	33.20	33.20	82.5	82.5	82.3	5.70	5.70	5.68	3.98	3.98	3.98	4	4.00
	10:52		Middle	3.5	24.50	24.50		8.00	8.00		33.20	33.20		82.0	82.1		5.66	5.67		3.98	3.99		4	
5/11/18	10:45	Fine	Middle	3.5	24.80	24.80	24.80	8.00	8.00	8.00	33.17	33.17	33.17	78.3	78.2	77.9	5.38	5.37	5.35	5.14	5.14	5.15	17	<u>16.00</u>
	10:47		Middle	3.5	24.80	24.80		8.00	8.00		33.17	33.17		77.2	77.8		5.30	5.34		5.15	5.17		15	
7/11/18	11:30	Fine	Middle	4.0	25.00	25.00	25.00	7.88	7.88	7.89	33.31	33.31	32.31	73.7	73.9	74.1	5.04	5.06	5.07	2.11	2.12	2.13	6	6.00
	11:32		Middle	4.0	25.00	25.00		7.89	7.89		31.31	31.31		74.2	74.5		5.07	5.09		2.13	2.14		6	
9/11/18	14:05	Fine	Middle	3.5	25.40	25.40	25.45	7.86	7.86	7.88	32.98	32.98	33.01	79.6	79.2	79.1	5.40	5.37	5.37	4.79	4.78	4.78	12	12.50
	14:07		Middle	3.5	25.50	25.50		7.90	7.90		33.04	33.04		79.1	78.6		5.37	5.33		4.78	4.76		13	
12/11/18	1:30	Cloudy	Middle	4.0	23.60	23.60	23.60	8.07	8.07	8.07	32.63	32.63	32.63	76.2	78.6	77.7	5.36	5.53	5.46	4.42	4.19	4.30	2	2.00
	1:31		Middle	4.0	23.60	23.60		8.07	8.07		32.63	32.63		78.7	77.2		5.53	5.42		4.37	4.22		<2	
14/11/18	2:15	Cloudy	Middle	4.0	23.70	23.70	23.70	8.21	8.21	8.21	32.72	32.72	32.72	75.0	76.5	76.7	5.26	5.37	5.38	6.54	6.39	6.34	17	<u>18.50</u>
	2:16		Middle	4.0	23.70	23.70		8.21	8.21		32.72	32.72		77.6	77.5		5.44	5.44		6.23	6.19		20	
16/11/18	3:45	Cloudy	Middle	4.0	23.70	23.70	23.70	8.11	8.11	8.11	32.71	32.71	32.71	75.3	73.8	75.6	5.28	5.19	5.31	2.16	2.10	2.12	3	2.50
	3:46		Middle	4.0	23.70	23.70		8.11	8.11		32.71	32.71		75.5	77.6		5.30	5.45		2.14	2.07		2	
19/11/18	11:30	Fine	Middle	3.5	24.30	24.30	24.30	7.74	7.74	7.75	33.08	33.08	33.08	72.1	73.1	72.9	5.00	5.06	5.06	3.12	3.14	3.15	3	3.00
	11:32		Middle	3.5	24.30	24.30		7.75	7.75		33.07	33.07		73.3	73.2		5.08	5.08		3.17	3.17		3	
21/11/18	10:40	Fine	Middle	3.5	24.70	24.70	24.70	7.69	7.69	7.70	33.28	33.28	33.28	73.0	74.7	74.4	5.02	5.13	5.11	2.07	2.13	2.11	5	5.50
	10:42		Middle	3.5	24.70	24.70		7.70	7.70		33.27	33.27		74.8	74.9		5.14	5.14		2.13	2.10		6	
23/11/18	12:31	Fine	Middle	3.5	23.90	23.90	23.90	7.53	7.52	7.54	33.25	33.25	33.18	49.2	48.8	49.0	3.43	3.41	3.42	4.33	4.32	4.32	5	4.50
	12:33		Middle	3.5	23.90	23.90		7.55	7.55		33.06	33.16		49.0	48.8		3.42	3.40		4.31	4.31		4	
26/11/18	1:15	Cloudy	Middle	4.0	20.00	20.00	20.00	8.22	8.22	8.22	28.88	28.88	28.89	78.6	78.2	78.4	6.03	6.00	6.01	3.47	3.50	3.41	6	6.50
	1:16		Middle	4.0	20.00	20.00		8.22	8.22		28.89	28.89		78.3	78.6		6.00	6.02		3.28	3.40		7	

Remarks:  
Single underline denotes exceedance over Action Level.  
Double underline denotes exceedance over Limit Level.



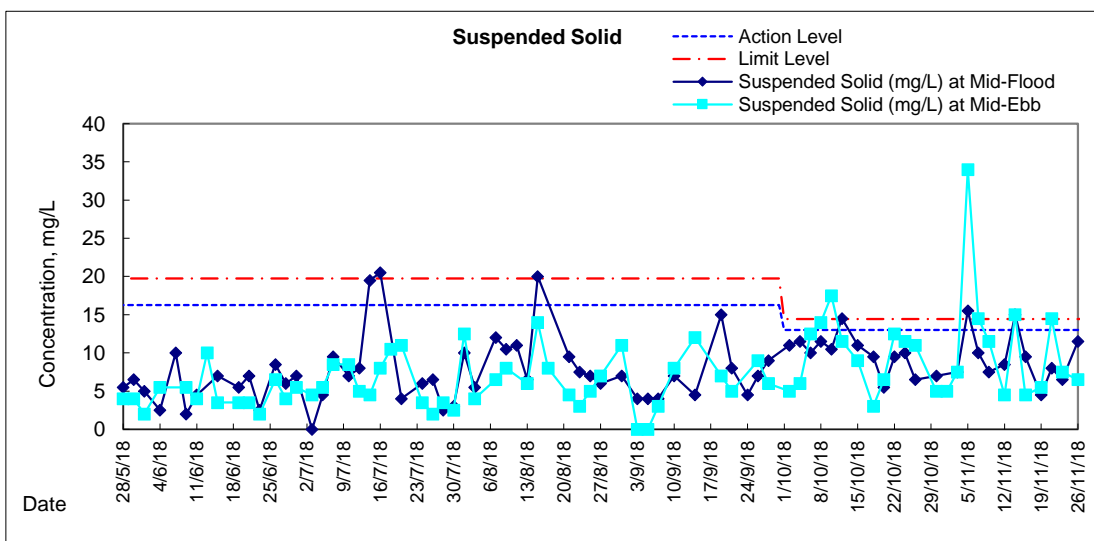
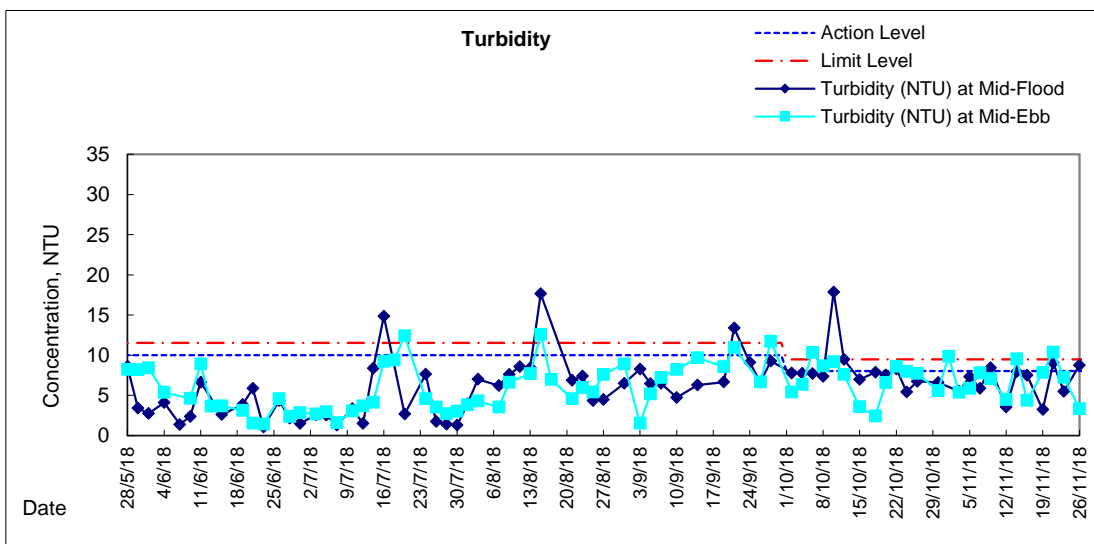
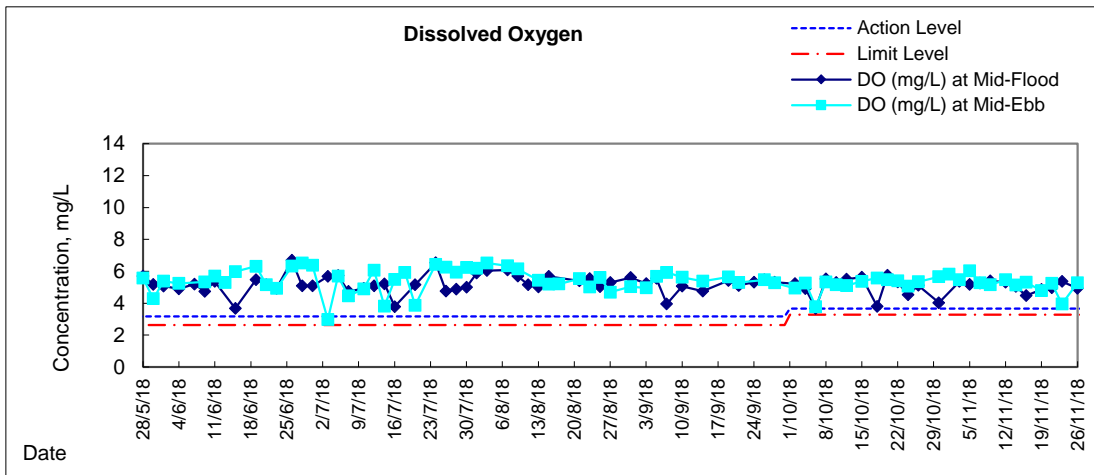
**Water Monitoring Result at WSD19 - Sheung Wan  
Mid-Ebb Tide**

Date	Time	Weather Condition	Sampling Depth		Water Temperature			pH			Salinity			DO Saturation			DO			Turbidity			Suspended Solids	
					°C		-		ppt		%		mg/L		NTU		mg/L							
					Value	Average	Value	Average	Value	Average	Value	Average	Value	Average	Value	Average	Value	Average	Value	Average				
30/10/18	1:58	Fine	Middle	4.0	23.50	23.50	23.50	8.10	8.10	8.10	31.79	31.79	31.79	80.4	80.0	79.7	5.70	5.67	5.66	5.73	5.93	5.58	5	5.00
	1:59		Middle	4.0	23.50	23.50		8.10	8.10	8.10	31.79	31.79		31.79	78.9		79.6	79.7		5.60	5.65		5.66	
1/11/18	3:00	Cloudy	Middle	4.0	23.80	23.80	23.80	8.44	8.44	8.44	32.94	32.94	32.94	83.2	83.5	83.1	5.82	5.84	5.82	9.63	9.77	<u>9.85</u>	4	5.00
	3:01		Middle	4.0	23.80	23.80		8.44	8.44	8.44	32.94	32.94		32.94	82.6		83.0	83.1		5.79	5.81		5.82	
3/11/18	7:30	Cloudy	Middle	4.0	23.70	23.70	23.65	8.00	8.00	8.01	33.22	33.22	33.23	78.8	76.7	78.1	5.52	5.38	5.48	5.41	5.41	5.38	8	7.50
	7:32		Middle	4.0	23.60	23.60		8.02	8.02	8.01	33.23	33.23		33.23	78.5		78.5	78.1		5.50	5.51		5.48	
5/11/18	11:45	Fine	Middle	4.0	25.00	25.00	25.00	7.90	7.90	7.91	33.35	33.35	33.35	89.1	89.0	88.4	6.09	6.08	6.04	5.89	5.89	5.88	32	<u>34.00</u>
	11:47		Middle	4.0	25.00	25.00		7.92	7.92	7.91	33.35	33.35		33.35	87.8		87.5	88.4		6.00	5.98		6.04	
7/11/18	13:35	Fine	Middle	3.5	25.60	25.60	25.65	7.80	7.80	7.81	33.39	33.39	33.39	77.4	77.9	78.0	5.25	5.27	5.28	7.79	7.80	7.81	14	<u>14.50</u>
	13:37		Middle	3.5	25.70	25.70		7.81	7.81	7.81	33.39	33.39		33.39	78.3		78.5	78.0		5.29	5.31		5.28	
9/11/18	11:50	Fine	Middle	4.0	26.10	26.10	26.10	7.70	7.70	7.72	33.16	33.16	33.17	76.2	77.2	76.7	5.12	5.18	5.15	7.11	7.08	7.09	11	11.50
	11:52		Middle	4.0	26.10	26.10		7.73	7.73	7.72	33.17	33.17		33.17	76.5		76.8	76.7		5.14	5.16		5.15	
12/11/18	2:15	Cloudy	Middle	4.0	23.70	23.70	23.70	8.13	8.13	8.13	31.62	31.62	31.62	78.0	79.6	77.4	5.51	5.62	5.47	4.75	4.46	4.48	4	4.50
	2:16		Middle	4.0	23.70	23.70		8.13	8.13	8.13	31.62	31.62		31.62	75.0		76.9	77.4		5.30	5.43		5.47	
14/11/18	2:57	Cloudy	Middle	4.0	23.60	23.60	23.60	8.14	8.14	8.14	32.28	32.28	32.28	71.2	74.6	72.9	5.01	5.25	5.13	9.63	9.41	<u>9.54</u>	20	<u>15.00</u>
	2:58		Middle	4.0	23.60	23.60		8.14	8.14	8.14	32.28	32.28		32.28	71.8		73.9	72.9		5.06	5.21		5.13	
16/11/18	4:40	Cloudy	Middle	4.0	23.70	23.70	23.70	8.07	8.07	8.07	32.17	32.17	32.17	73.9	76.4	75.3	5.21	5.39	5.31	4.43	4.42	4.39	5	4.50
	4:41		Middle	4.0	23.70	23.70		8.07	8.07	8.07	32.17	32.17		32.17	76.0		74.7	75.3		5.36	5.26		5.31	
19/11/18	8:30	Fine	Middle	3.5	24.90	24.90	24.95	7.53	7.53	7.52	33.25	33.25	33.26	70.4	70.1	70.0	4.82	4.80	4.80	7.86	7.86	7.86	6	5.50
	8:32		Middle	3.5	25.00	25.00		7.50	7.50	7.52	33.26	33.26		33.26	70.0		69.6	70.0		4.80	4.76		4.80	
21/11/18	11:35	Fine	Middle	3.5	25.10	25.10	25.20	7.64	7.64	7.65	33.32	33.32	33.32	76.8	76.5	77.1	5.23	5.21	5.25	10.39	10.93	<u>10.38</u>	14	<u>14.50</u>
	11:37		Middle	3.5	25.30	25.30		7.66	7.66	7.65	33.32	33.32		33.32	77.6		77.6	77.1		5.28	5.28		5.25	
23/11/18	13:45	Fine	Middle	3.5	24.20	24.20	24.18	7.55	7.55	7.57	33.38	33.38	33.38	57.4	56.8	56.9	3.98	3.94	3.94	7.29	7.26	7.26	7	7.50
	13:47		Middle	3.5	24.10	24.20		7.58	7.58	7.57	33.37	33.37		33.38	56.7		56.6	56.9		3.93	3.92		3.94	
26/11/18	3:20	Cloudy	Middle	4.0	20.60	20.60	20.60	8.14	8.14	8.14	32.57	32.57	32.57	70.4	70.1	70.9	5.24	5.22	5.28	3.41	3.47	3.36	7	6.50
	3:21		Middle	4.0	20.60	20.60		8.14	8.14	8.14	32.57	32.57		32.57	71.4		71.7	70.9		5.32	5.34		5.28	

Remarks:  
Single underline denotes exceedance over Action Level.  
Double underline denotes exceedance over Limit Level.

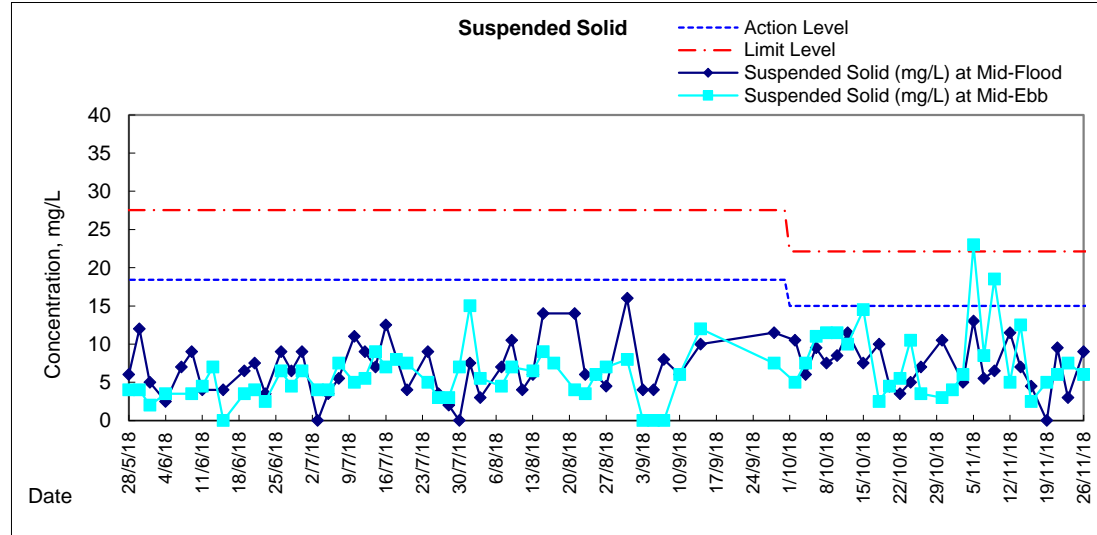
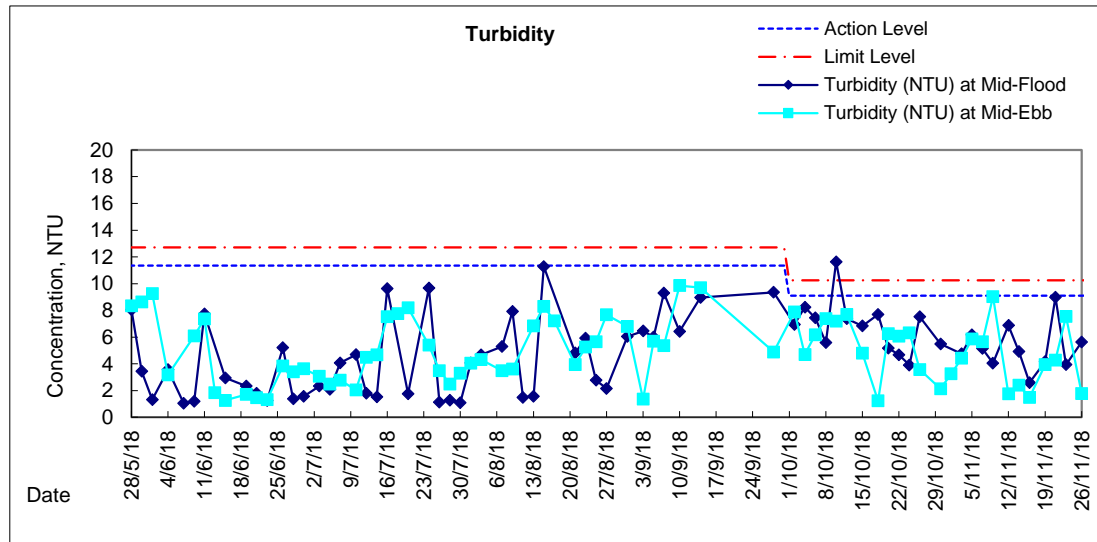
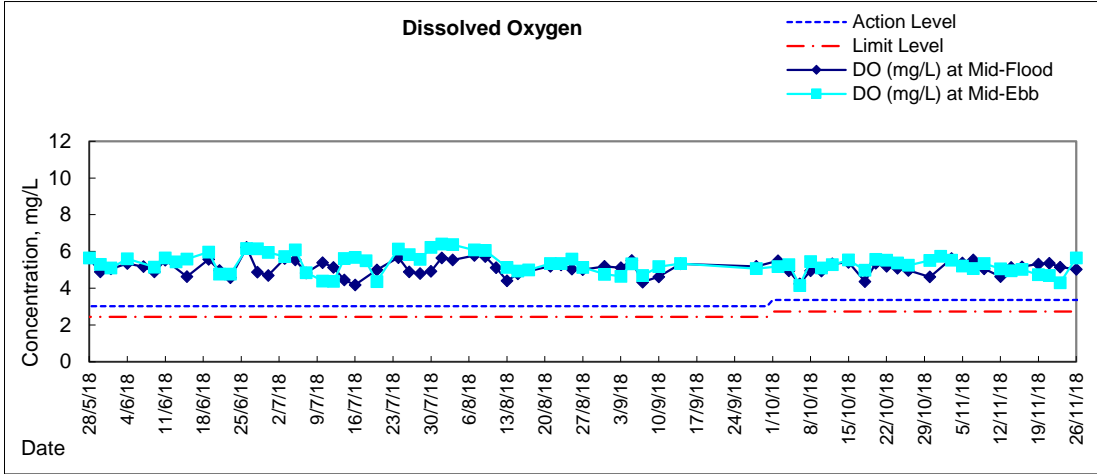


# Graphic Presentation of Water Quality Result of WSD19 - Sheung Wan





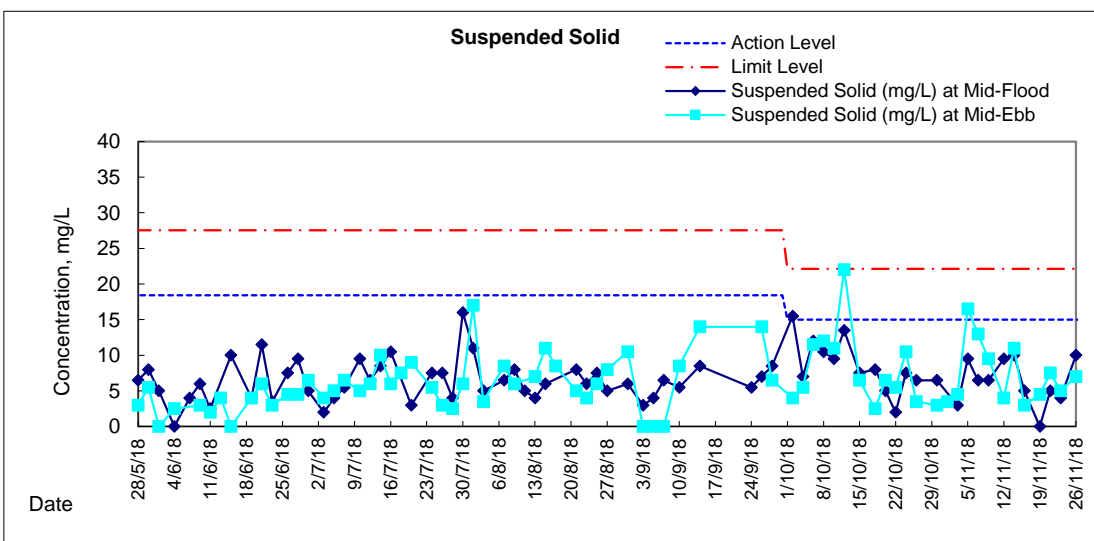
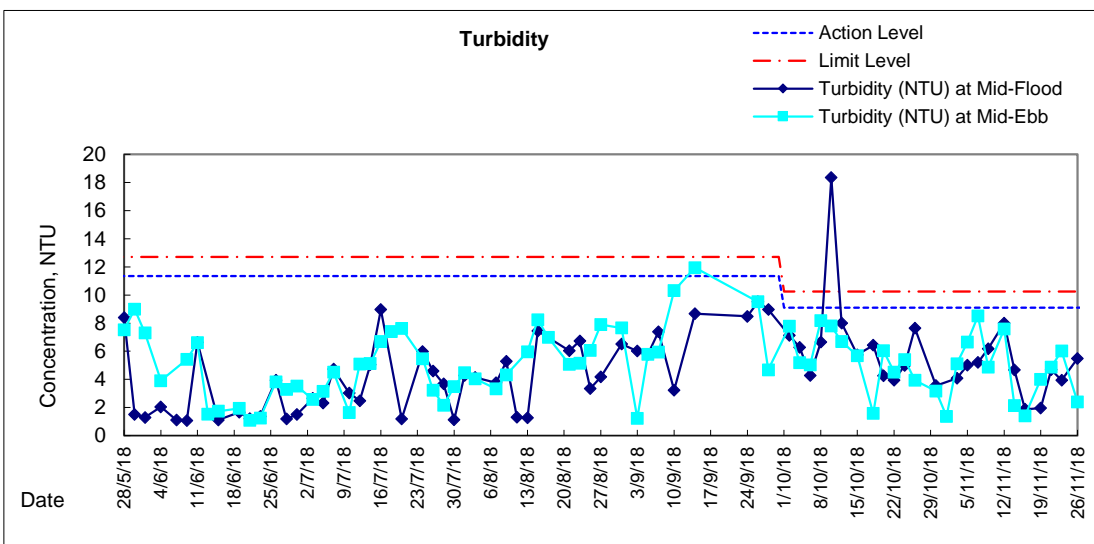
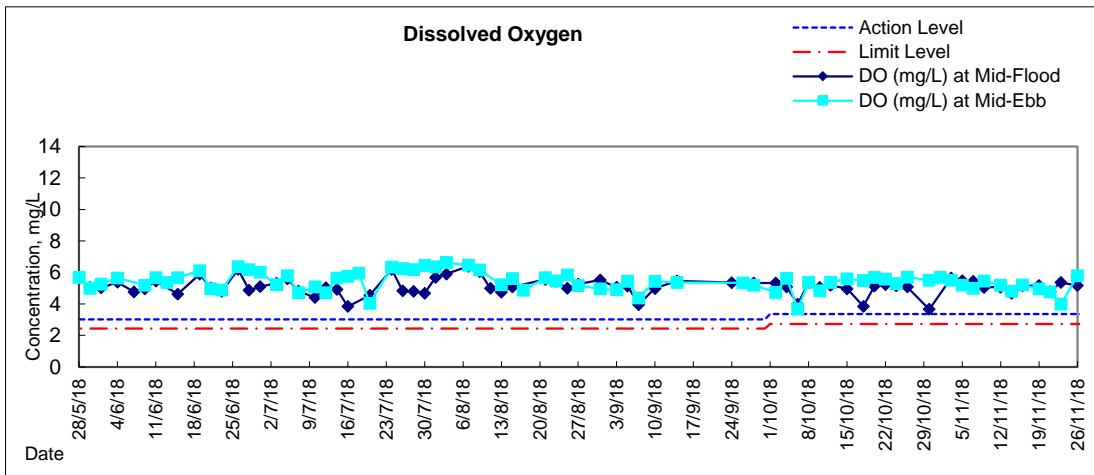
### Graphic Presentation of Water Quality Result of C1 - HKCEC





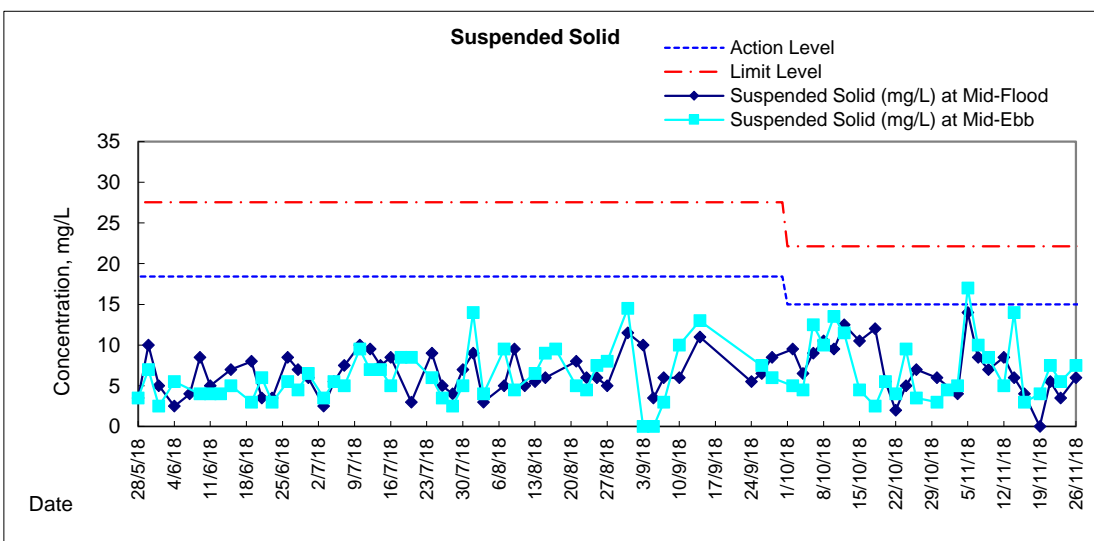
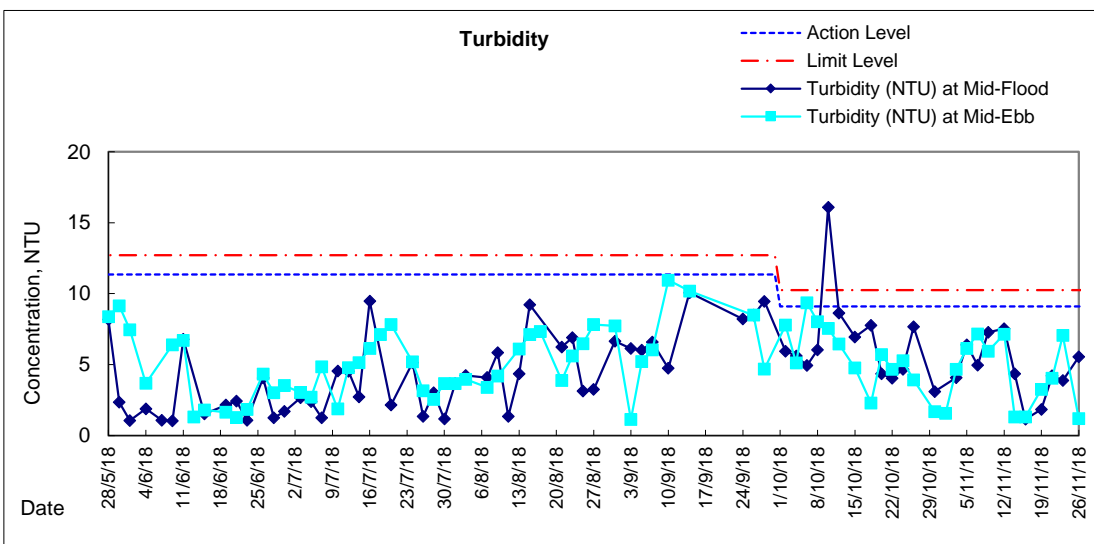
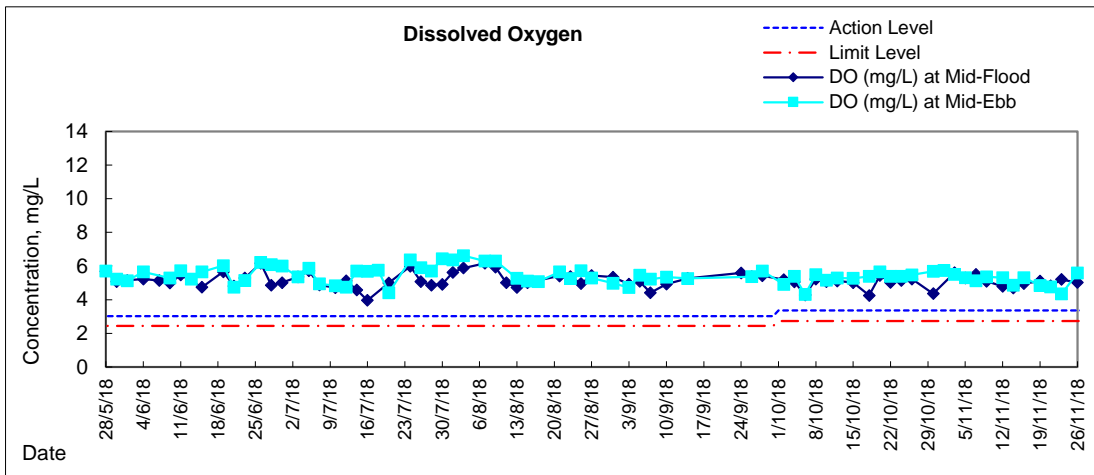


# Graphic Presentation of Water Quality Result of P1 - HKCEC Phase I



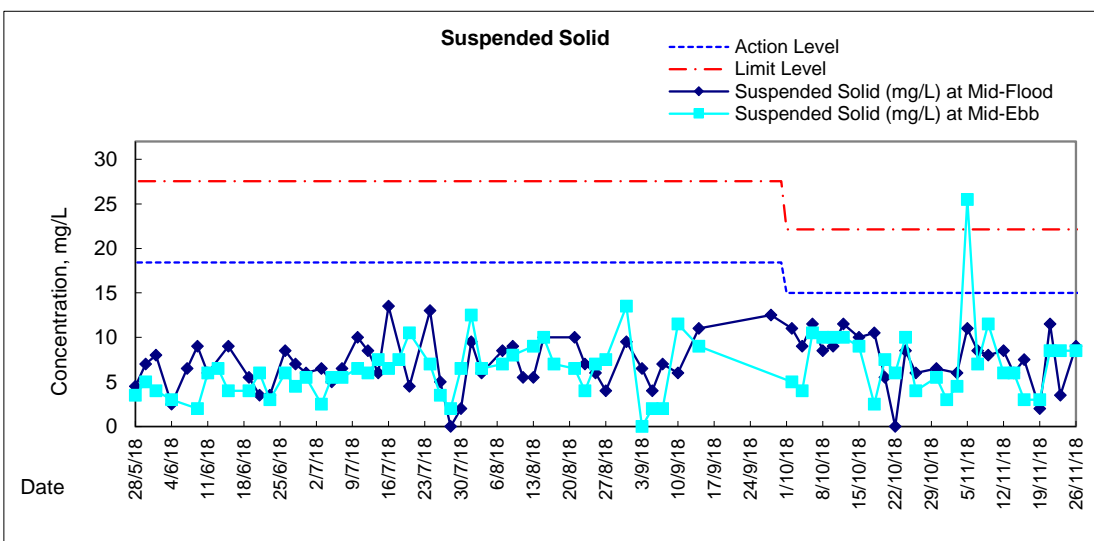
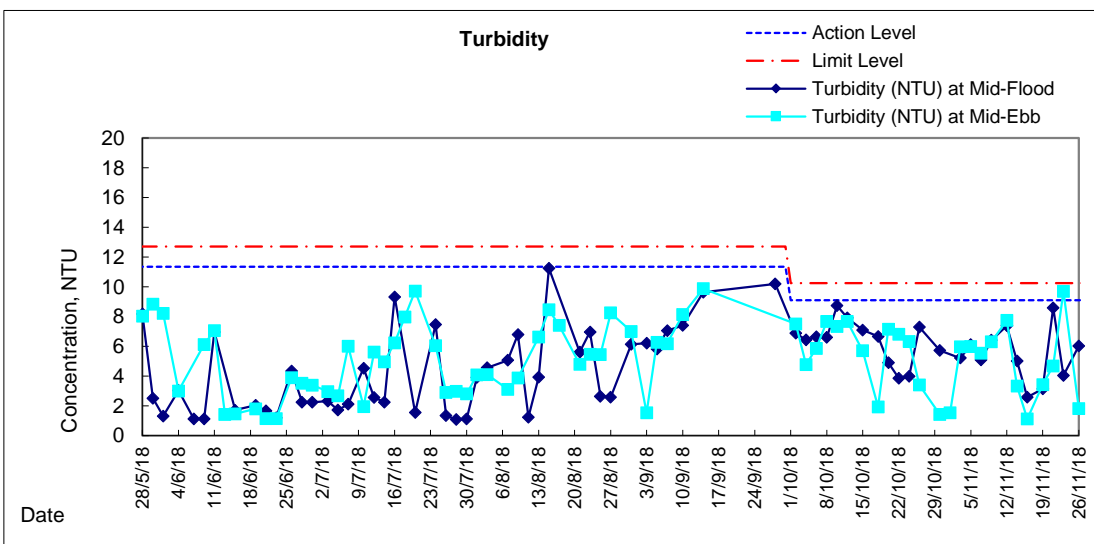
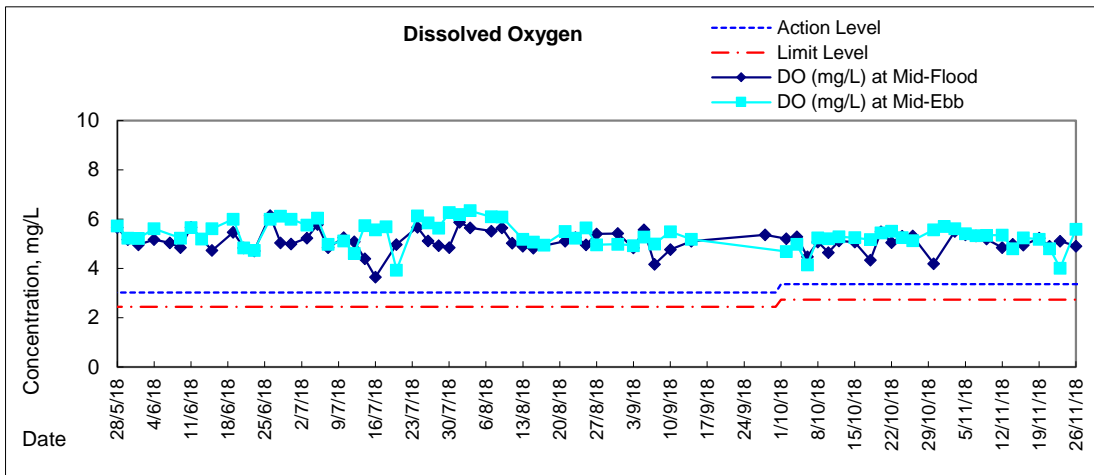


### Graphic Presentation of Water Quality Result of P3 - APA



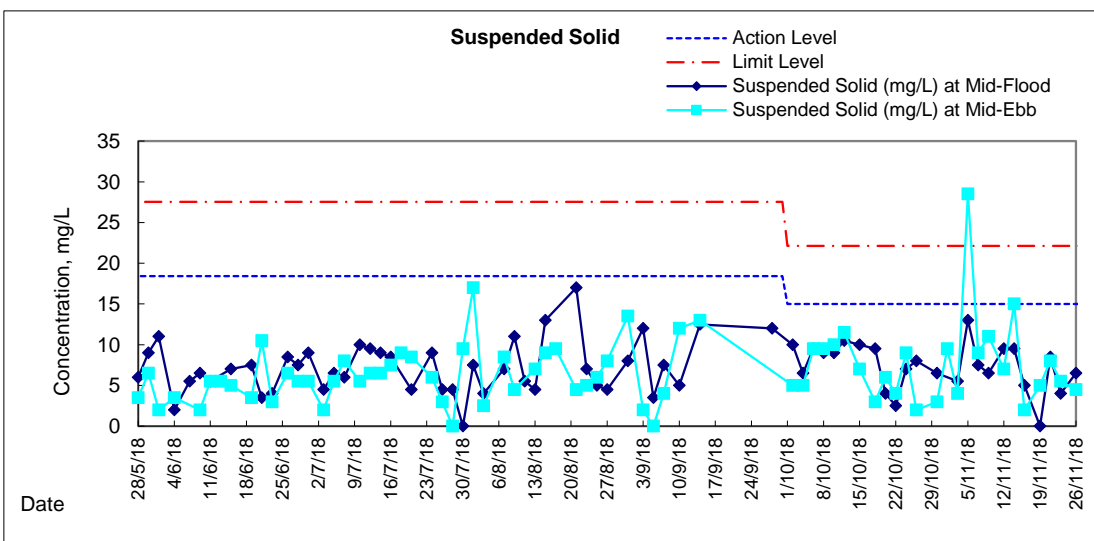
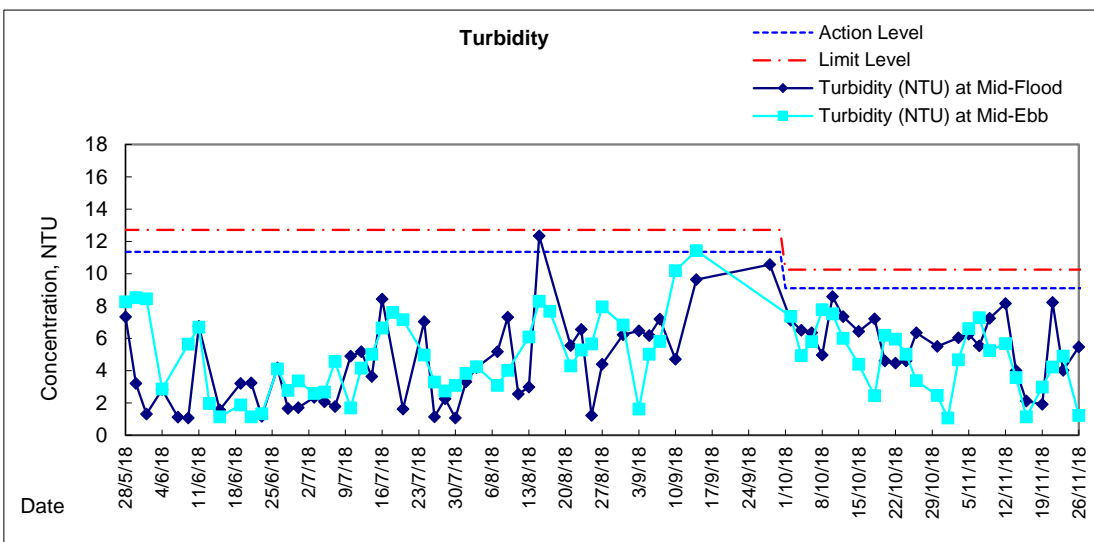
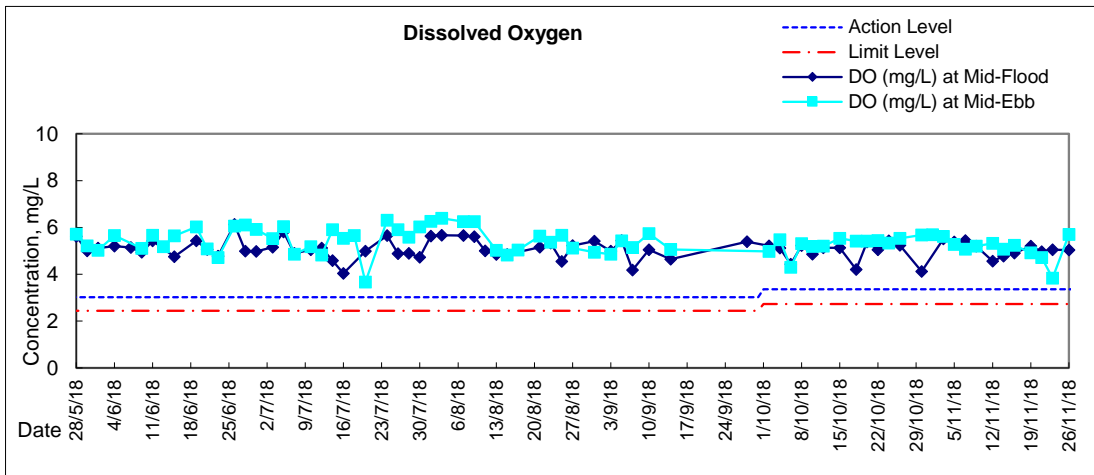


### Graphic Presentation of Water Quality Result of P5 - WCT / RT / IT





### Graphic Presentation of Water Quality Result of P4 - SOC





# Graphic Presentation of Water Quality Result of RW21-P789 - GEC/CRC/SHK

